

*dream,  
explore.* 2021



SINCE 1964

**NORTHLANDER**



# ...discover!

## NORTHLANDER

**E**nter the world of Northlander... where amazing cottages bring your vacation living to a whole new level! Choose from an extensive line of customizable floor plans that showcase incredible living spaces. Select one of our professionally co-ordinated décor packages, add the furnishings and appliances of your choice, and you are on your way to creating your very own vacation paradise. Isn't it time you opened the door to your new Northlander?

Over 21,000  
Northlanders have  
been manufactured  
to date!

We thank our  
customers for their  
continued support!



## Luxe

Northlander brings luxury to cottage living with stunning designs that showcase incredible features. Along with premium construction and materials, this is luxury in every sense of the word!



## Escape

ALL SEASON

Northlander's Escape All-Season provides you the perfect reason to enjoy any season. Discover all the year-round pleasures Canada provides for you, your family, and your friends.



## Escape

Northlander's Escape offers more floor plans with even more clever room configurations than you can imagine! And if you can imagine more, we are here to help you customize it all for your perfect three-season cottage!



## Reflection

It's easy to experience cottage living with Northlander's Reflection. The seven floor plans are designed to maximize your enjoyment, and provide single-, two-, and three-bedroom options. Your perfect Reflection is waiting for you!





# Luxe

Life's too short for the ordinary, which is why Northlander has created the Luxe – their signature series line of cottages. Feel it, and experience it first hand! This is luxury cottage living taken to a spectacular new level. So leave the worries and cares of everyday life behind and surround yourself with the sophisticated, smart, contemporary styling of a Luxe by Northlander!

# ...explore

Contemporary lines offer exceptional height and elegance, creating the framework for this remarkable open living space. Expansive custom cabinetry, beautiful upgraded amenities such as a quartz countertop with undermount stainless steel sink and deluxe single-handle faucet complete this Luxe brilliantly and beautifully. Give yourself the perks that make life special!





## Relax in Style

Unique sloped ceilings showcase the towering custom cabinetry in this Luxe living room. Relax, put your feet up and enjoy the 50" wall-mounted fireplace, and share photos on your flat screen TV. You are surrounded by premium picture windows with casement windows below, providing you with views of the great outdoors.



## Bedroom Storage Galore

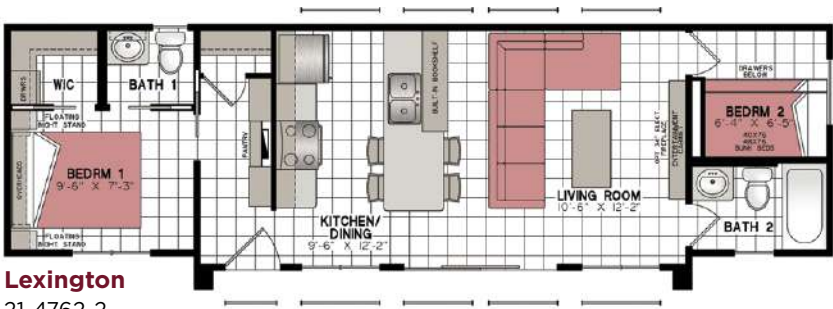
Ample space for all your belongings in this large master bedroom that features built-in armoires! Large picture window brings in the morning sun.



## Modern Bath Convenience

Walk-in fiberglass shower surround with optional built-in seating, floating vanity cabinet, and mirror above.





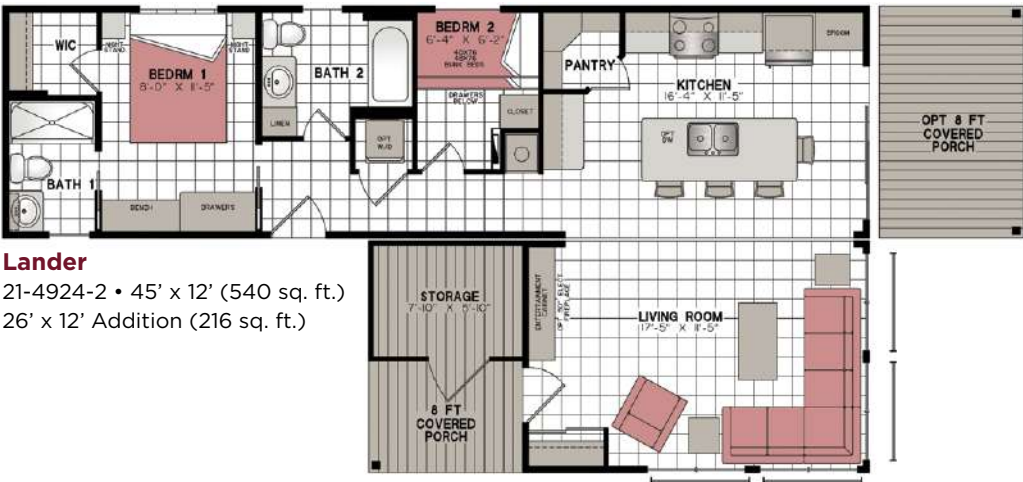
**Lexington**  
21-4762-2  
43' x 12' (540 sq. ft.)



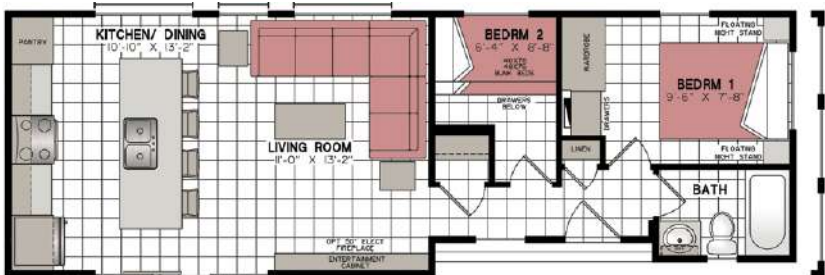
**Luxor**  
21-4761-2  
42' x 13'-9" (540 sq. ft.)



**Lockport**  
21-4763-2  
44' x 13' (540 sq. ft.)



**Lander**  
21-4924-2 • 45' x 12' (540 sq. ft.)  
26' x 12' Addition (216 sq. ft.)



**Lakota**  
21-4835-2  
41' x 13'-9" (539 sq. ft.)



**Lincoln**  
21-4760-2  
39'-3" x 13'-9" (540 sq. ft.)



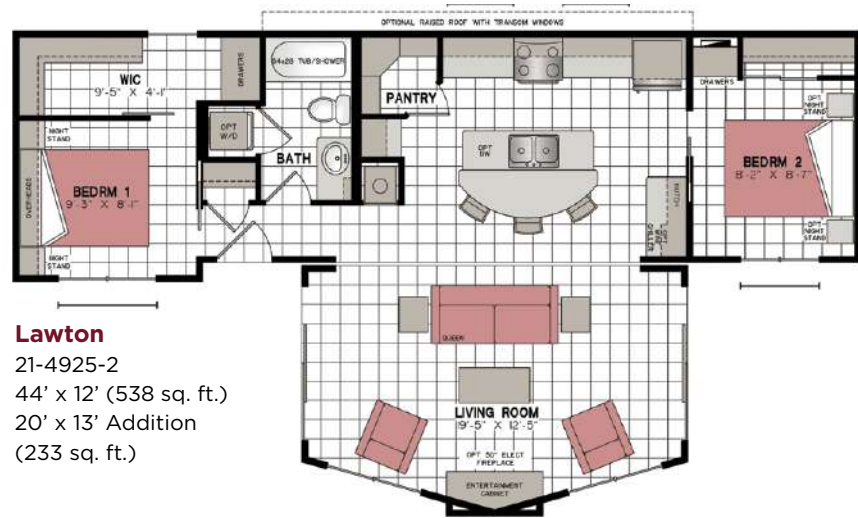
**Lavana**  
21-4766-2 • 40' x 12' (480 sq. ft.)  
27' x 12' Addition (264 sq. ft.) & Upper Deck



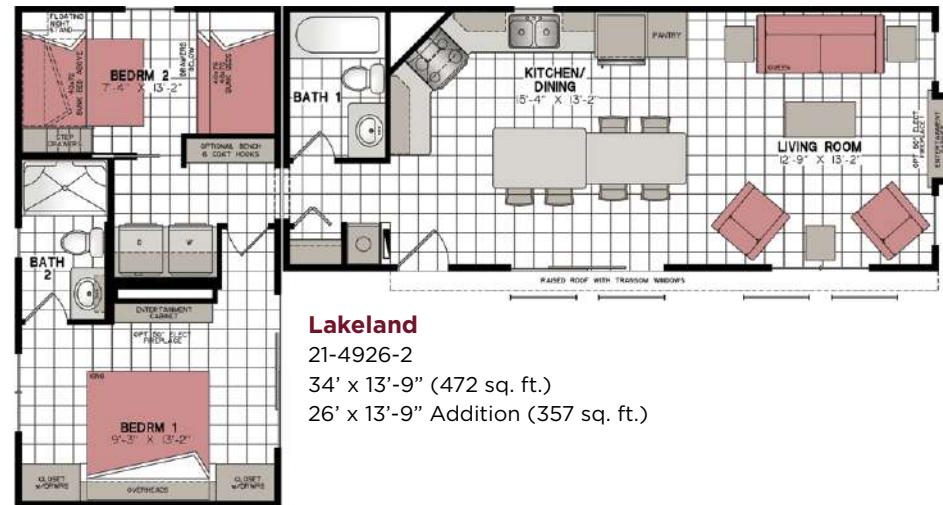
## Floor Plans

## Specifications

NORTHLANDER... in proud partnership with our suppliers



**Lawton**  
21-4925-2  
44' x 12' (538 sq. ft.)  
20' x 13' Addition  
(233 sq. ft.)



**Lakeland**  
21-4926-2  
34' x 13'-9" (472 sq. ft.)  
26' x 13'-9" Addition (357 sq. ft.)



**Lethbridge**  
21-4765-3 • 50' x 12' (468 sq. ft.)  
42' x 12' Addition (372 sq. ft.)

### Frames and Floors

- Heavy-duty steel frame undercarriage with detachable hitch
- Seamless reinforced fibremesh sealtite underbelly between chassis and floor
- 2" x 6" floor joists on 16" centres
- 5/8" Dri Deck tongue-and-groove sub-flooring glued and screw-nailed to floor joist
- Heat ducts within insulated floor cavity with 4" x 10" registers
- 1/2" main gas line with outlet at back end

### Sidewalls

- 2" x 4" wall studs on 16" centres
- 90" high sidewalls with unique belt-rail structural stiffeners
- 6-mil. poly vapour barrier
- 1/4" exterior sheathing
- Prefinished vinyl interior wallboard
- Tyvek exterior building wrap
- CanExel exterior prefinished siding

### Roof and Ceiling

- Roof pitch – floor plan specific
- Roof trusses on 16" centres (88 lbs. per sq. ft. ground snow load)
- 7/16" roof sheathing
- 6-mil. poly vapour barrier
- Ice and water shield protection at the eave (shingle application)
- Self-sealing fibreglass asphalt architectural shingles (limited lifetime warranty)
- Low slope applications – EPDM rubber roof
- Vented attic space to eliminate moisture and heat build-up on a shingled roof
- Continuous vinyl vented soffit and aluminium fascia
- Pre-textured drywall ceiling panel

### Plumbing

- Heatlink cross-linked polyethylene water lines and fittings
- 16-gallon propane gas direct spark ignition (DSI) fast-recovery water heater
- Water heater by-pass
- 4.8-litre ultra-low-flush water-saver toilet with insulated tank

- Designer vanity with a porcelain sink
- Deluxe built-in medicine cabinet with mirror and open shelf
- Deluxe one-piece fibreglass tub/shower combination with a curved rod and colour coordinating tub drapery panel
- Matte black single lever faucets
- Matte black towel bar and tissue holder
- Double compartment 8" deep stainless steel kitchen sink

### Electrical and Heating

- 24-circuit 30 amp hydro panel with 30' plug-in cord
- Electric smoke detector
- Safe-T-Alert gas alarm
- Decora-style light switches and receptacles
- Wired and prepared for basement air conditioning
- 50-cfm bathroom exhaust fan
- Interior GFCI-protected receptacle in bathroom and kitchen
- 2 Exterior GFCI-protected receptacles
- Exterior light at each door
- 40,000 BTU forced air propane furnace with in-floor ducting, electronic ignition and wall thermostat (floor plan specific)
- 56,000 BTU forced air propane furnace with electronic ignition, wall thermostat, and fresh air inlet to furnace. (floor plan specific)
- Matte black residential interior light fixtures with LED bulbs & white recessed LED pot lights in kitchen, living room & bathroom
- Newport series pendant lights over island where applicable
- TV access box in master bedroom and living room

### Windows and Doors

- White Northstar vinyl Thermopane windows with low 'E' glass, and removable screens
- 32"x 80" pre-finished white maintenance free insulated residential full lite exterior door
- White Northstar vinyl patio door with low 'E' glass, screen, and no grills

### Insulation

- Ceilings: R-20 Owens Corning pink fibreglass batt insulation
- Walls: R-12 Owens Corning pink fibreglass batt insulation
- Floors: R-20 Owens Corning pink fibreglass batt insulation

### Interior Décor Finish

- Eurobox style cabinetry with adjustable shelves, decorative crown moulding and toe kick on all kitchen cabinets
- Thermofoil bevelled edge cabinet doors with concealed hinges and matte black bar pulls
- Large entertainment cabinet wall unit with space for an optional electric fireplace
- Premium laminate kitchen counter with laminate front edging
- Ceramic tile decorative backsplash in kitchen
- Roller glide-out metal drawer box hardware
- Durable maintenance friendly woodgrain & tile patterned vinyl flooring throughout
- White 2-panel interior doors with matte black door hardware
- Drawers below bunk beds in most second and third bedrooms
- Wardrobe closet in some second and third bedrooms
- Large wardrobe closet with mirror sliders or walk-in closet in master bedroom
- Ceiling crown mouldings throughout with casing on windows and doors
- Custom designer drapery valances on removable rods
- Bunk matt covers in second and third bedrooms
- Drapery panel at patio door

### Optional Items

- Plumb and wire for washer and dryer where floor plan permits
- Coloured Northstar vinyl Thermopane windows with low 'E' glass, removable screens, and no grills
- Coloured aluminium soffit & fascia



www.aforest.com



www.royalbuildingsolutions.com



www.canarm.com



www.heatlink.com  
A Division of Desco Plumbing and Heating Inc.  
www.watercloset.ca



www.dimplex.ca



WHAT DO YOU NEED TO PROTECT™

www.dupont.com



Proud Distributor to  
Northlander for over 50 Years  
www.glpcanada.com



Your Local Source for Industrial and Construction Supplies  
www.industrialchoicesupply.com



# Escape

## ALL SEASON

Escape when the season suits you! Spoil yourself by stepping into the relaxing year-round comfort of your new Escape All Season. With well-insulated ceiling, walls and floors, along with an upgraded furnace, your Northlander will stand up to the cold of winter and the heat of summer. Enjoy the year-round beauty that surrounds you, both inside and out!



...relax

We put our heart and soul into each and every Northlander created, and together with your personalized choices, your Northlander becomes yours without compromise.





## Smart and Sleek!

Distinctive picture window along with transom windows let this kitchen shine bright. Contemporary two-tone cabinets set the trend, with quartz counter and island offering the cooks ample space to prepare, and guests a seat to supervise under the raised ceiling... a Northlander signature feature.



## Wine and Dine

The dining area is shown with a custom cabinet, floating shelves, and a convenient, built-in wine fridge.



## Escape Within

This master bedroom is crafted like no other. From the bold, double barn door access, to the spectacular shiplap feature wall with wardrobes, fireplace, and flat screen TV... why not have it all?

The master bath is equally impressive, with deluxe double sink vanity and mirrors, walk-in contemporary shower with frameless glass doors, and matte black fixtures.



# Escape All Season



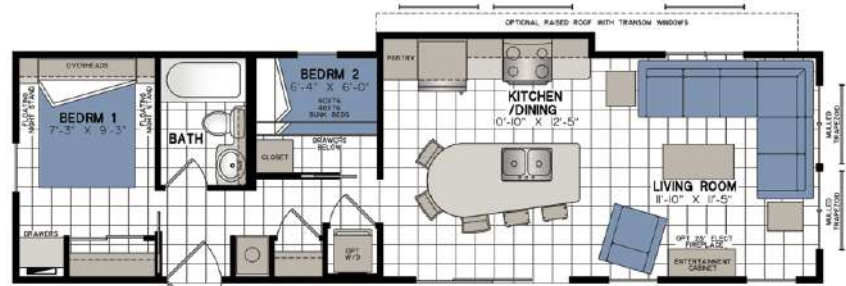
## Modern Comfort

Trendy furnishings and features complete this second bedroom, shown here in the Steel Storm designer package. Provide your visitors with the comfort they deserve.



## Laundry Hideaway

Barn doors provide access and hide the laundry room, making one of life's regular tasks an easy-breezy convenience.



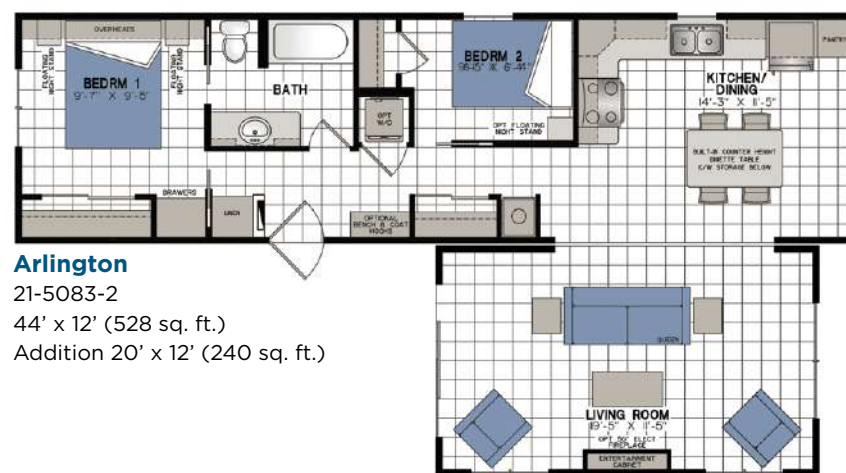
**Ancona**  
21-4920-2 • 42' x 12' (515 sq. ft.)



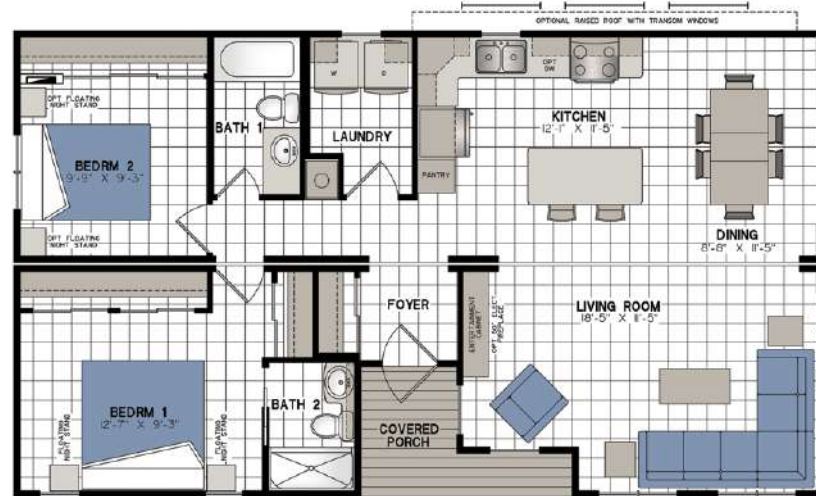
**Ajax**  
21-4998-2 • 42' x 12' (504 sq. ft.)



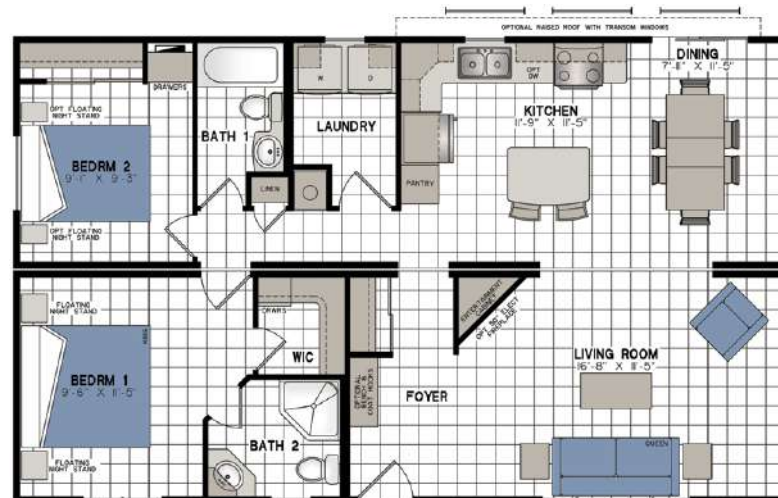
**Atlanta**  
21-4999-2 • 43' x 12' (537 sq. ft.)



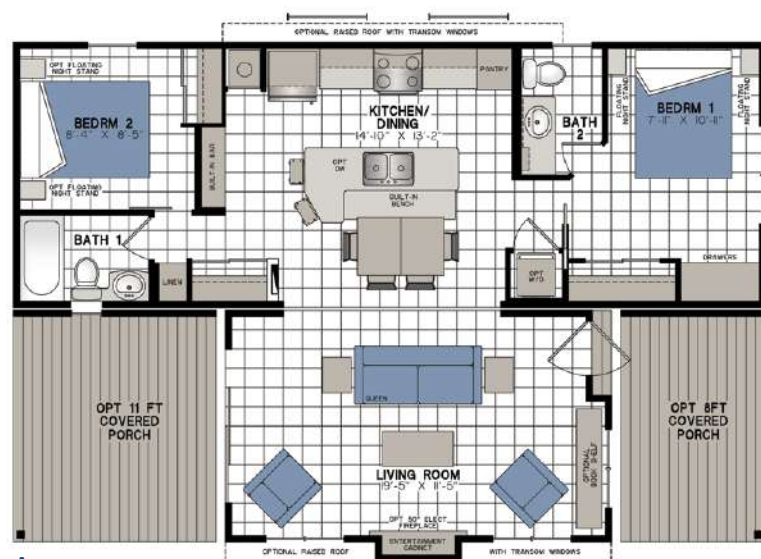
**Arlington**  
21-5083-2  
44' x 12' (528 sq. ft.)  
Addition 20' x 12' (240 sq. ft.)



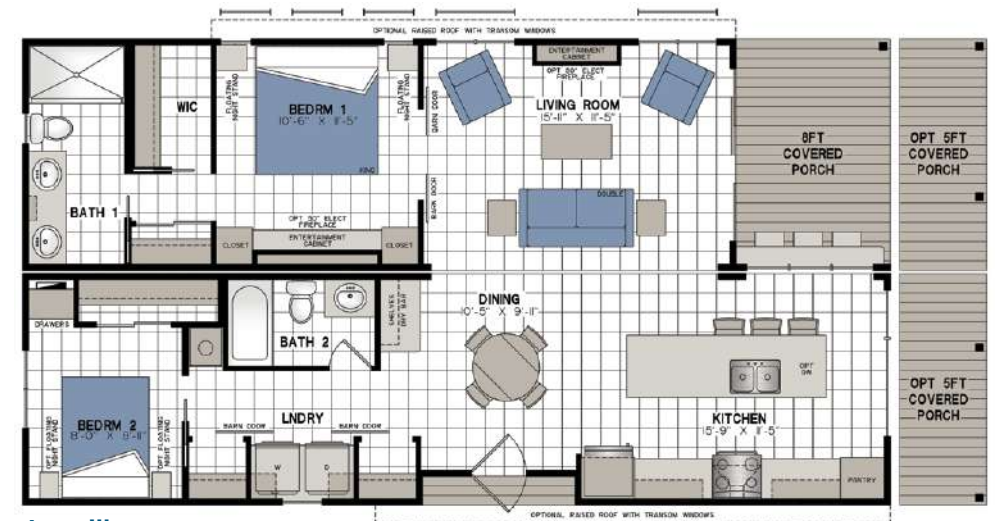
**Andover**  
21-4901-2 • 42' x 12' (504 sq. ft.) • 42' x 12' Addition (456 sq. ft.)



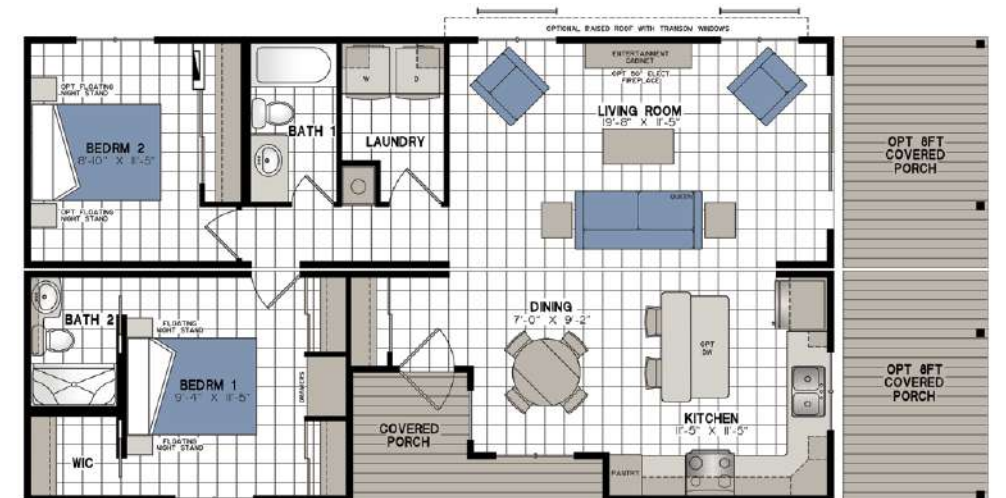
**Arrowhead**  
21-4745-2 • 40' x 12' (480 sq. ft.) • 40' x 12' Addition (480 sq. ft.)



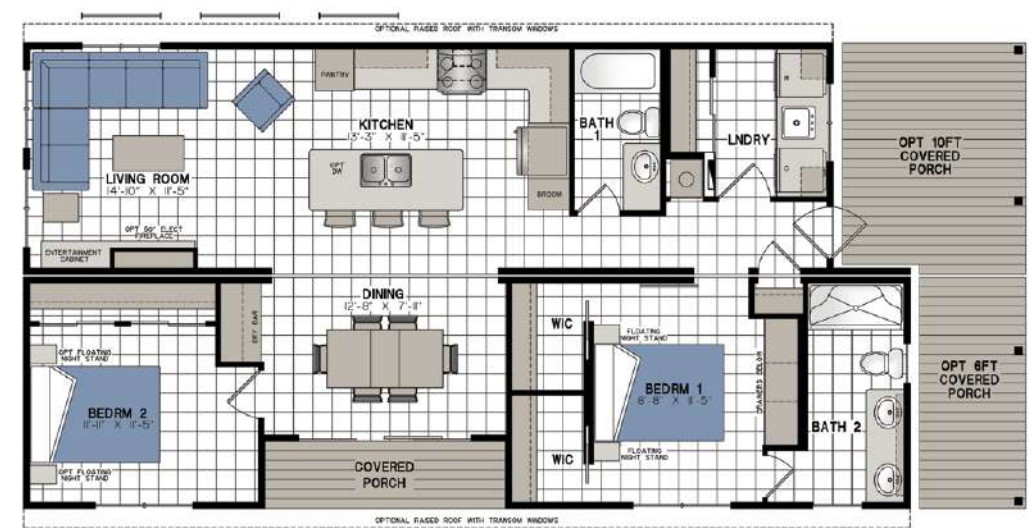
**Avera**  
21-4748-2 • 39' x 13'-9" (536 sq. ft.) • 20' x 12' Addition (240 sq. ft.)



**Amarillo**  
21-4959-2 • 45' x 12' (540 sq. ft.) • 45' x 12' Addition (444 sq. ft.)



**Alma**  
21-4922-2 • 42' x 12' (504 sq. ft.) • 42' x 12' Addition (448 sq. ft.)



**Anaheim**  
21-4918-2 • 42' x 12' (504 sq. ft.) • 46' x 12' Addition (508 sq. ft.)

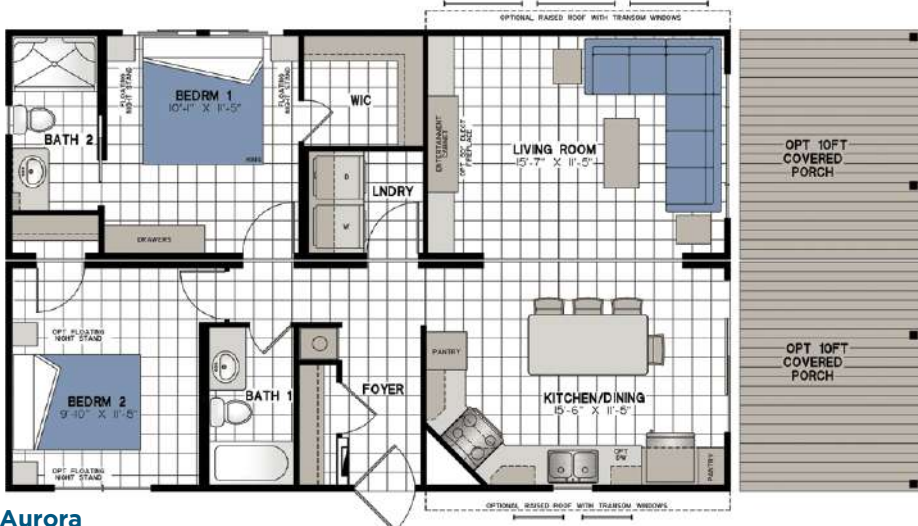




**Aberdeen**  
21-4746-2 • 45' x 12' (540 sq. ft.) • 45' x 12' Addition (531 sq. ft.)



**Algoma**  
21-5081-2 • 45' x 12' (540 sq. ft.) • 27' x 12' Addition (324 sq. ft.)



**Aurora**  
21-5082-2 • 38' x 12' (456 sq. ft.) • 38' x 12' Addition (456 sq. ft.)



**Acadia**  
21-4855-3 • 42' x 12' (533 sq. ft.) • 42' x 12' Addition (436 sq. ft.)



**Ashbury**  
21-5080-2 • 45' x 12' (540 sq. ft.) • 41' x 12' Addition (468 sq. ft.)



**Addison**  
21-5084-2 • 39' x 13'-9" (536 sq. ft.) • 39' x 12' Addition (418 sq. ft.)

## Specifications

### Frames and Floors

- Heavy-duty steel frame undercarriage with detachable hitch
- Seamless reinforced fibremesh sealite underbelly between chassis and floor
- 2" x 6" floor joists on 16" centres
- 5/8" Dri Deck tongue-and-groove subflooring glued and screw-nailed to floor joist
- Heat ducts within insulated floor cavity with 4" x 10" registers
- 1/2" main gas line with outlet at back end

### Sidewalls

- 2" x 4" wall studs on 16" centres
- 90" high sidewalls with unique belt-rail structural stiffeners
- 6-mil. poly vapour barrier
- 1/4" exterior sheathing
- Pre-finished vinyl interior wallboard
- Tyvek exterior building wrap
- Horizontal exterior vinyl siding
- 12" decorative exterior window shutters on all windows

### Roof and Ceiling

- 4/12 roof pitch with overhangs on single wide units
- 3.5/12 roof pitch with overhangs on double wide units
- Pre-engineered roof trusses on 16" centres (88 lbs. per sq. ft. ground snow load)
- 7/16" roof sheathing
- 6-mil. poly vapour barrier
- Ice and water shield protection at the eave
- Self-sealing fibreglass asphalt architectural shingles (limited lifetime warranty)
- Vented attic space to eliminate moisture and heat build-up
- Continuous vinyl vented soffit and aluminium fascia
- Expansive vaulted ceiling
- Pre-textured drywall ceiling panel

### Plumbing

- Heatlink cross-linked polyethylene water lines and fittings
- 16-gallon propane gas direct spark ignition (DSI) fast-recovery water heater

- Water heater by-pass
- 4.8-litre ultra-low-flush water-saver toilet with insulated tank
- Designer vanity with a porcelain sink
- Deluxe built-in medicine cabinet with mirror and open shelf
- Deluxe one-piece fibreglass tub/shower combination with a curved rod and colour coordinating tub drapery panel
- Chrome high-arch single lever kitchen faucet with pull-out spray
- Chrome single lever vanity faucet
- Chrome towel bar and tissue holder
- Double compartment 8" deep stainless steel kitchen sink
- Plumb and wire for washer and dryer where floor plan permits

### Electrical and Heating

- 24-circuit 30-amp hydro panel with 30' plug-in cord
- 120-volt heat tape junction box at water inlet
- Electric smoke detector
- Safe-T-Alert gas alarm
- Decora-style light switches and receptacles
- Wired and prepared for basement air conditioning
- 50-cfm bathroom exhaust fan
- Interior GFCI-protected receptacle in bathroom and kitchen
- Exterior GFCI-protected receptacle
- Exterior coach light at all doors
- 56,000 BTU forced air propane furnace with electronic ignition and wall thermostat
- Fresh air inlet to furnace
- White LED residential interior light fixtures & recessed LED pot lights in kitchen, living room & bathroom
- Albany Series pendent lights over island where applicable
- TV access box in master bedroom and living room

### Windows and Doors

- White vinyl Northstar Thermopane single-hung (tilt to clean) windows with low 'E' glass, no grills, and removable screens
- 32"x 80" pre-finished white maintenance free insulated residential exterior door with large window, no grills, and heavy duty aluminium self-

storing storm door

- White vinyl Northstar Thermopane patio door with low "E" glass, screen and no grills
- Pentagon or trapezoid Thermopane window with low "E" on front end where floor plan permits

### Insulation

- Ceilings: R-20 Owens Corning pink fibreglass batt insulation
- Optional R-32 Owens Corning pink fibreglass batt insulation in ceiling
- Walls: R-12 Owens Corning pink fibreglass batt insulation
- Floors: R-20 Owens Corning pink fibreglass batt insulation

### Interior Décor Finish

- Eurobox style cabinetry with adjustable shelves, decorative crown moulding and toe kick on all kitchen cabinets
- Thermofoil shaker style cabinet doors with concealed hinges
- Large entertainment cabinet wall unit with space for an optional electric fireplace
- Premium laminate kitchen counter with laminate front edging
- Flex-tile decorative backsplash in kitchen and bathrooms
- Roller glide-out metal drawer box hardware
- Durable maintenance friendly woodgrain & tile patterned vinyl flooring throughout
- White 2-panel interior doors with satin stainless lever door hardware
- Nightstands in master bedroom
- Built-in chest of drawers in master bedroom in single wides
- Wardrobe storage in second and third bedrooms
- Large wardrobe closet with mirrored sliders or walk-in closet in master bedroom
- Ceiling crown mouldings throughout with casing on windows and doors
- Custom designer drapery valances on removable rods
- Bunk matt covers in second and third bedrooms
- Drapery panels at patio door

NORTHLANDER... in proud partnership with our suppliers



GE APPLIANCES



MARATHON

HARDWARE

www.marathonhardware.com



www.northstarwindows.com



A North American Leader in Panel Processing and Conversion. Over 40 years of service and quality  
www.okaply.com



INNOVATIONS FOR LIVING™  
www.owenscorning.ca



www.richelieu.com



Russel Metals

www.russelmetals.com



www.sga.ca



SLUMBER SLEEP PRODUCTS

www.slumbersleep.ca



a new flooring dimension

Distributed By

SYNTEC INDUSTRIES

www.syntecind.com



# Escape

Cherish your time away at the cottage without compromise! Surround yourself with quality and craftsmanship, comfort and conveniences, and experience cottage living with peace of mind, knowing that Northlander's 57 years of experience is standing behind you and your Escape!

Enjoy cottage living your way – to its fullest – in your Escape by Northlander!

...enjoy



Beneath the crafted ceiling beams is a living space that maximizes your cottage experience. Large windows and transom roofline provide a spectacular view of the great outdoors! Just sit back and relax by the 50" fireplace.





## Let the Sun Shine In!

Two expansive windows offer a magnificent view to wake up to from inside this beautifully furnished master bedroom. Featured with spacious custom-crafted wall-to-wall wardrobe, with room for all your belongings! The designer décor package – Tropic River – completes the look with style.

## Walk-In Shower

The 3-piece ensuite bathroom is outfitted with double medicine cabinets, banjo-style counter, chrome fixtures, and accessible one-piece fibreglass walk-in shower surround with sliding glass doors.

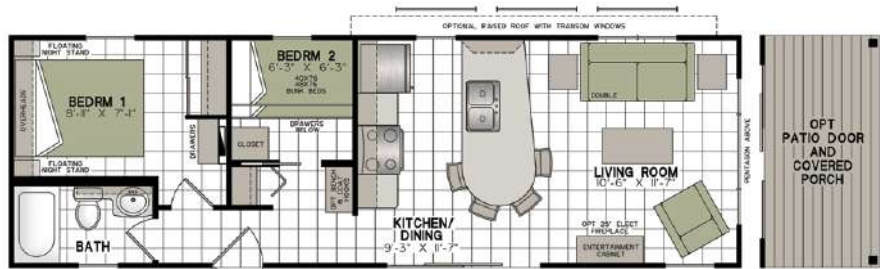
## Room to Spare!

Northlander continues to maximize your living space with this expansive kitchen-dining room... all without compromising storage space! Ingeniously crafted custom kitchen island/ dining table combination ensures time together is undivided, with seating for everyone!

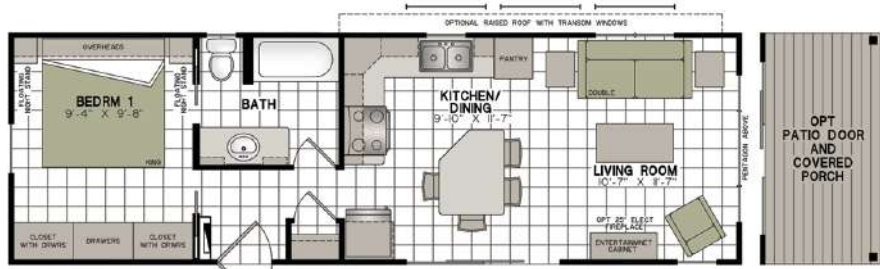


A superb gathering place under the exquisite raised ceilings, with pendant lighting and a beautiful view!





**Elkhart**  
21-4844-2 • 38' x 12' (456 sq. ft.)



**Emerson**  
21-5052-1 • 38' x 12' (456 sq. ft.)



**Elmira**  
21-4726-2 • 40' x 12' (485 sq. ft.)



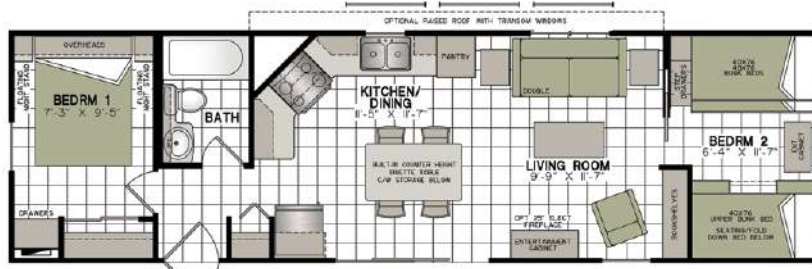
**Emerald**  
21-4969-2 • 40' x 12' (480 sq. ft.)



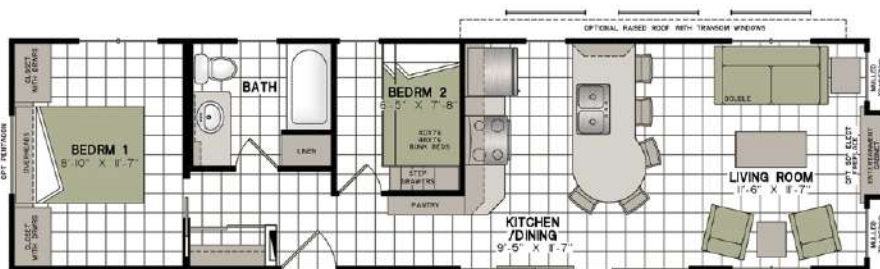
**Ezra**  
21-4979-2 • 43' x 12' (538 sq. ft.)



**Elda**  
21-4961-2 • 40' x 12' (485 sq. ft.)



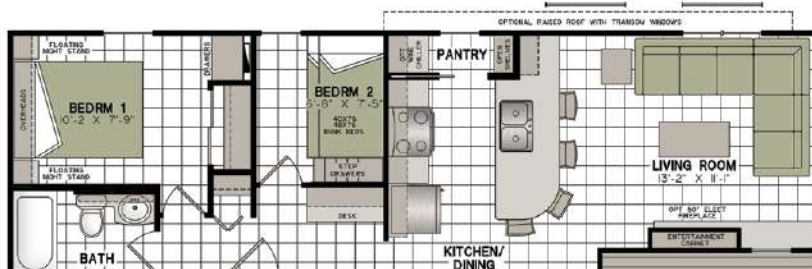
**Essex**  
21-4725-2 • 42' x 12' (504 sq. ft.)



**Edee**  
21-4893-2 • 44'-8" x 12' (540 sq. ft.)



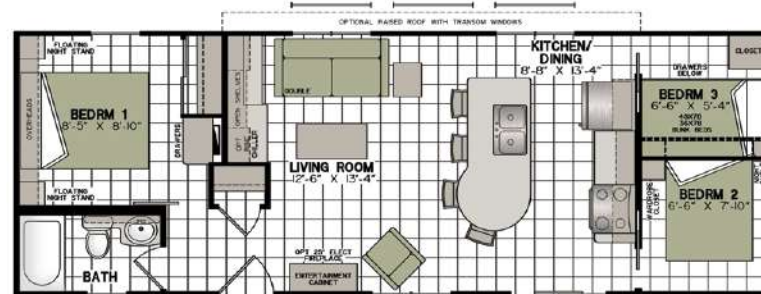
**Elmur**  
21-5058-3 • 42'-11" x 12' (540 sq. ft.)



**Erie**  
21-4963-2 • 42' x 13' (540 sq. ft.)



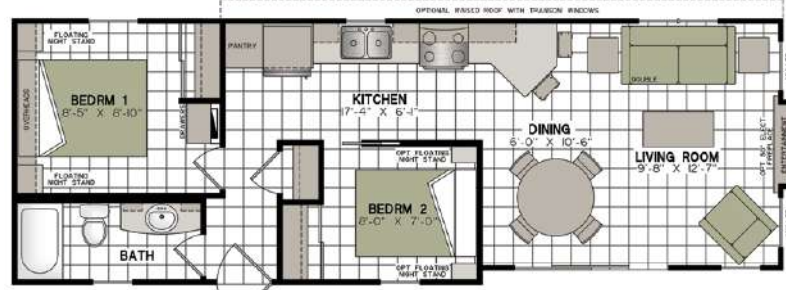
**Eldon**  
21-4889-2 • 36' x 13'-9" (495 sq. ft.)



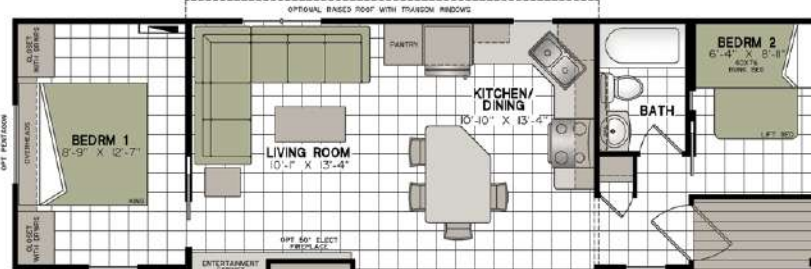
**Exhibition**  
21-4720-3 • 39'-3" x 13'-9" (538 sq. ft.)



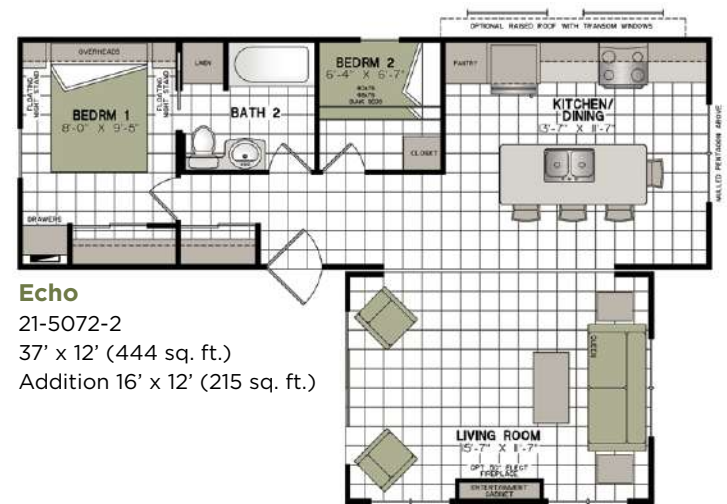
**Evanston**  
21-4691-1 • 39'-6" x 13'-9" (540 sq. ft.)



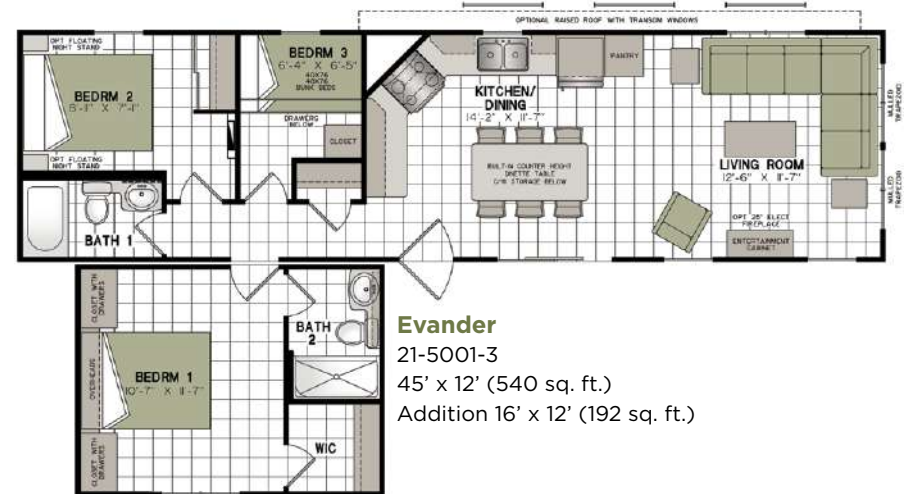
**Eleanor**  
21-4997-2 • 40' x 13'-9" (540 sq. ft.)



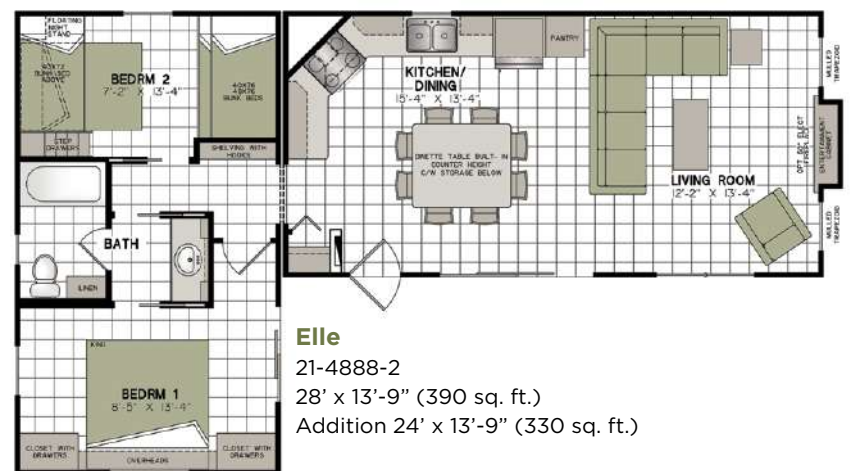
**Elora**  
21-5062-2 • 42' x 13' (538 sq. ft.)



**Echo**  
21-5072-2  
37' x 12' (444 sq. ft.)  
Addition 16' x 12' (215 sq. ft.)



**Evander**  
21-5001-3  
45' x 12' (540 sq. ft.)  
Addition 16' x 12' (192 sq. ft.)

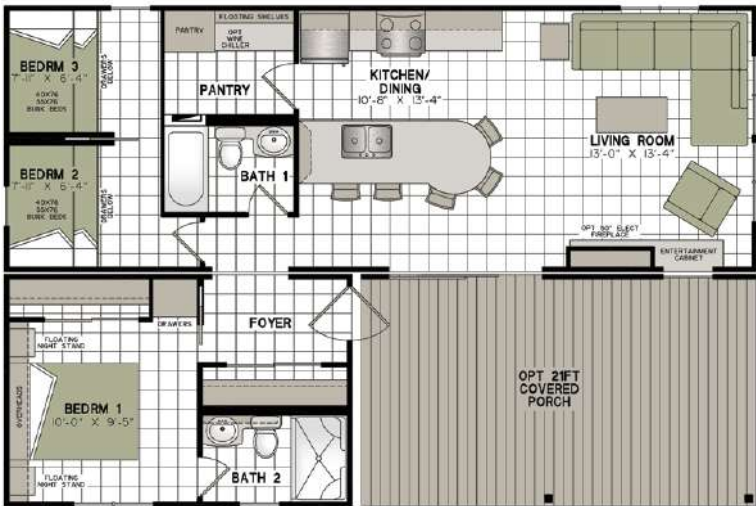


**Elle**  
21-4888-2  
28' x 13'-9" (390 sq. ft.)  
Addition 24' x 13'-9" (330 sq. ft.)





**Edinburgh**  
21-4958-3 • 40' x 12' (480 sq. ft.)  
Addition 20' x 12' (240 sq. ft.)



**Edison**  
21-4849-3 • 39' x 13'-9" (536 sq. ft.)  
Addition 18' x 12' (216 sq. ft.)



**Etobicoke**  
21-4850-2 • 40' x 12' (480 sq. ft.)  
Addition 20' x 12' (236 sq. ft.)



**Exmore**  
21-5003-3 • 40' x 12' (480 sq. ft.)  
Addition 38' x 12' (456 sq. ft.)



**Eugene**  
21-5004-2 • 35' x 12' (446 sq. ft.)  
Addition 40' x 12' (336 sq. ft.)



**Exton**  
21-4960-2 • 45' x 12' (540 sq. ft.)  
Addition 20' x 12' (240 sq. ft.)

### Frames and Floors

- Heavy-duty steel frame undercarriage with detachable hitch
- Seamless reinforced fibremesh sealtite underbelly between and floor
- 2" x 6" floor joists on 16" centres
- 5/8" Dri Deck tongue-and-groove subflooring glued and screw-nailed to floor joist
- Heat ducts within insulated floor cavity with 4" x 10" registers
- 1/2" main gas line with outlet at back end

### Sidewalls

- 2"x 3" wall studs on 16" centres
- 90" high sidewalls with unique belt-rail structural stiffeners
- Pre-finished vinyl interior wallboard
- Tyvek exterior building wrap
- Horizontal exterior vinyl siding
- 12" decorative exterior window shutters on front and door side

### Roof and Ceiling

- 4/12 roof pitch with overhangs on single wide units
- 3.5/12 roof pitch with overhangs on double wide units
- Pre-engineered roof trusses on 16" centres (88 lbs. per sq. ft. ground snow load)
- 7/16" roof sheathing
- Ice and water shield protection at the eave
- Self-sealing fibreglass asphalt architectural shingles (limited lifetime warranty)
- Vented attic space to eliminate moisture and heat build-up
- Continuous vinyl vented soffit and aluminium fascia
- Expansive vaulted ceiling
- Pre-textured drywall ceiling panel

### Plumbing

- Heatlink cross-linked polyethylene water lines and fittings
- 16-gallon propane gas direct spark ignition (DSI) fast-recovery water heater
- Water heater by-pass
- 4.8-litre ultra-low-flush water-saver toilet with insulated tank

- Designer vanity with a porcelain sink and banjo counter top where applicable
- Deluxe built-in medicine cabinet with mirror and open shelf
- Deluxe one-piece fibreglass tub/shower combination with a curved rod and colour coordinating tub drapery panel
- Chrome high-arch single lever kitchen faucet with pull-out spray
- Chrome single lever vanity faucet
- Chrome towel bar and tissue holder
- Double compartment 8" deep stainless steel kitchen sink

### Electrical and Heating

- 24-circuit 30 amp hydro panel with 30' plug-in cord
- Electric smoke detector
- Safe-T-Alert gas alarm
- Decora-style light switches and receptacles
- Wired and prepared for basement air conditioning
- 50 cfm bathroom exhaust fan
- Interior GFCI-protected receptacle in bathroom and kitchen
- Exterior GFCI-protected receptacle
- Exterior coach light at patio door
- 40,000 BTU forced air propane furnace with in-floor ducting, electronic ignition and wall thermostat
- 56,000 BTU forced air propane furnace with electronic ignition and wall thermostat in some floor plans.
- Brushed pewter residential interior light fixtures with LED bulbs & white recessed LED pot lights in kitchen & bath
- Albany series pendant lights over island where applicable
- TV access box in master bedroom and living room

### Windows and Doors

- White vinyl Thermopane single-hung (tilt to clean) windows with removable screens and no grills
- 32"x 80" pre-finished white maintenance free insulated residential exterior door with large window, no grills, and heavy-duty aluminium self-storing storm door
- White Thermopane patio door with screen (no grills)

- Pentagon, or Trapezoid Thermopane window on front end where floor plan permits

### Insulation

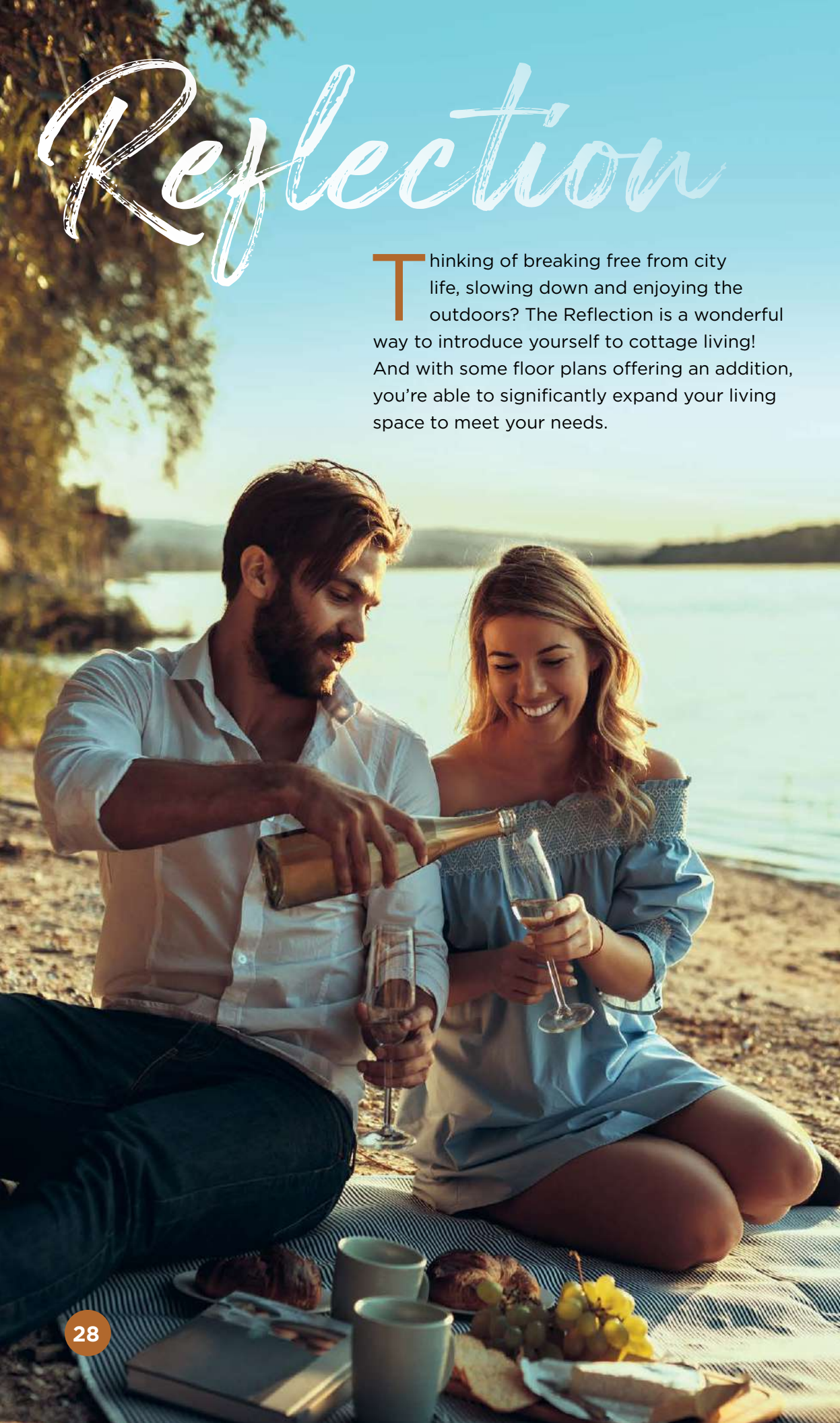
- Ceilings: R-12 Owens Corning pink fibreglass batt insulation
- Walls: R-8 Owens Corning pink fibreglass batt insulation
- Floors: R-12 Owens Corning pink fibreglass batt insulation

### Interior Décor Finish

- Eurobox style cabinetry with adjustable shelves, decorative crown moulding and toe kick on all kitchen cabinets
- Thermofoil shaker style cabinet doors with concealed hinges
- Large entertainment cabinet wall unit with space for an optional electric fireplace
- Premium laminate kitchen counter with laminate front edging
- Flex-tile decorative backsplash in kitchen and bathrooms
- Roller glide-out metal drawer box hardware
- Durable maintenance friendly woodgrain & tile patterned vinyl flooring throughout
- White 2-panel interior doors with satin stainless lever door hardware
- Nightstands in master bedroom
- Built-in chest of drawers in master bedroom
- Overhead cabinets above bed in master bedroom
- Wardrobe storage in second and third bedrooms
- Large wardrobe closet with mirrored sliders or walk-in closet in master bedroom
- Ceiling crown mouldings throughout with casing on windows and doors
- Custom designer drapery valances on removable rods
- Bunk matt covers in second and third bedrooms
- Drapery panels at patio door







# Reflection

Thinking of breaking free from city life, slowing down and enjoying the outdoors? The Reflection is a wonderful way to introduce yourself to cottage living! And with some floor plans offering an addition, you're able to significantly expand your living space to meet your needs.



# ...unwind

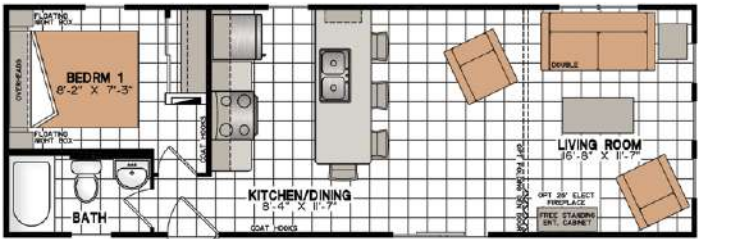
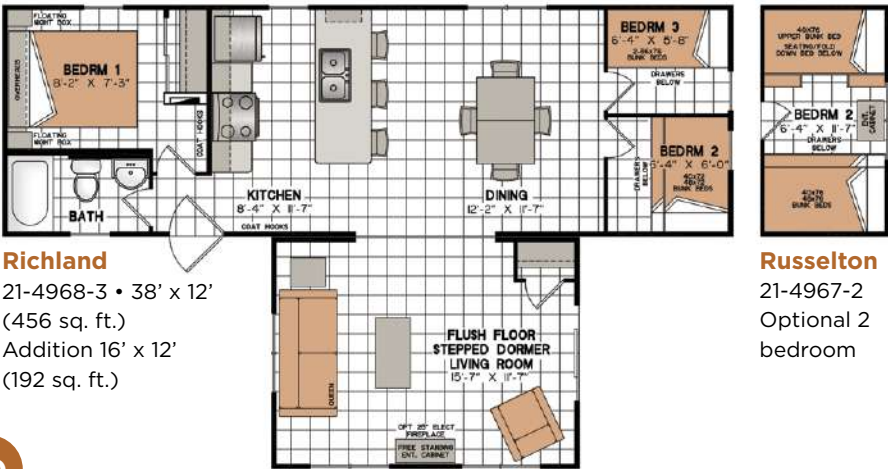
The well-planned design of this kitchen offers plenty of custom cabinetry for storage, large peninsula counter with double sink, as well as room for full size appliances. Together with the spacious dining room, everyone can be seated and be a part of the dinner conversation!



# Reflection

## Wake Up in Style

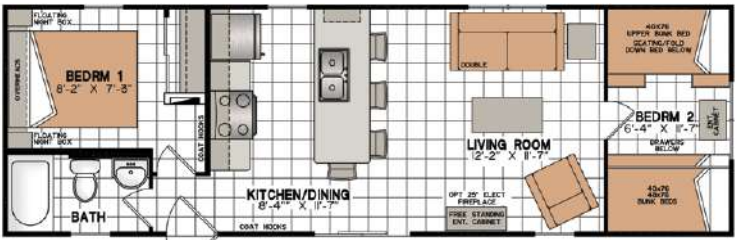
Custom cabinetry above the bed matches the floating nightstands and custom headboard, creating a lovely master suite that boasts a full-sized closet with mirrored doors. Choose from one of three professionally co-ordinated décor packages to complete the look.



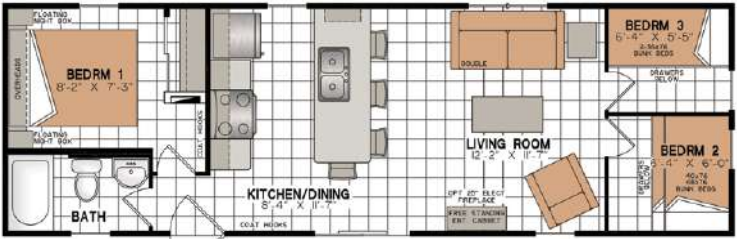
**Redkey**  
21-4952-1 • 36' x 12' (432 sq. ft.)



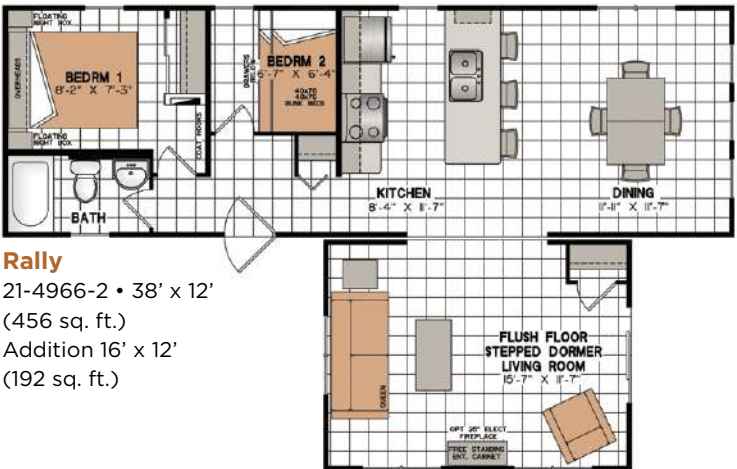
**Ragsdale**  
21-4953-2 • 38' x 12' (456 sq. ft.)



**Ridgeville**  
21-4954-2 • 38' x 12' (456 sq. ft.)



**Riley**  
21-4955-3 • 38' x 12' (456 sq. ft.)



**Rally**  
21-4966-2 • 38' x 12' (456 sq. ft.)  
Addition 16' x 12' (192 sq. ft.)

## Floor Plans

## Specifications

### Frames and Floors

- Heavy duty steel frame undercarriage with detachable hitch
- Seamless reinforced fibremesh sealtite underbelly between chassis and floor
- 2" x 6" floor joists on 16" centres
- 5/8" Dri Deck tongue-and-groove subflooring glued and screw-nailed to floor joist
- Heat ducts within insulated floor cavity with 4" x 10" registers
- 1/2" main gas line with outlet at back end

### Sidewalls

- 2" x 3" wall studs on 16" centres
- 96" high sidewalls with unique belt-rail structural stiffeners
- Pre-finished vinyl interior wallboard (Norwich Pearl ONLY)
- Tyvek exterior building wrap
- Horizontal exterior vinyl siding
- 12" decorative exterior window shutters on front and door side

### Roof and Ceiling

- 4/12 roof pitch with overhangs
- Pre-engineered roof trusses on 16" centres (88 lbs. per sq. ft. ground snow load)
- 7/16" roof sheathing
- Ice and water shield protection at the eave
- Self-sealing fibreglass asphalt architectural shingles (limited lifetime warranty)
- Vented attic space to eliminate moisture and heat build-up
- Continuous vinyl vented soffit and aluminium fascia
- Lofty flat ceiling throughout entire unit
- Pre-textured drywall ceiling panel

### Plumbing

- Heatlink cross-linked polyethylene water lines and fittings
- 16-gallon propane gas direct spark ignition (DSI) fast-recovery water heater
- Water heater by-pass
- 4.8-litre ultra-low-flush water-saver toilet with insulated tank
- Deluxe one-piece fibreglass tub/shower combination with colour coordinating tub valance
- Vanity with white finish, porcelain top and 2 handle chrome faucet
- Deluxe white medicine cabinet with mirror

- Chrome towel bar and tissue holder
- Double compartment 8"-deep stainless steel kitchen sink
- Chrome single lever faucet in kitchen

### Electrical and Heating

- 24-circuit 30 amp hydro panel with 30' plug-in cord
- Electric smoke detector
- Safe-T-Alert gas alarm
- Decora-style light switches and receptacles
- Wired and prepared for basement air conditioning
- 50 cfm bathroom exhaust fan
- Interior GFCI-protected receptacle in bathroom and kitchen
- Exterior GFCI-protected receptacle
- Exterior coach light at patio door
- 40,000 BTU forced air propane furnace with in-floor ducting, electronic ignition and wall thermostat
- Brushed pewter residential interior light fixtures with LED bulbs
- TV access box in living room & 21-4954-2 bedroom # 2

### Windows and Doors

- Deluxe vinyl Thermopane single-hung (tilt-to-clean) windows with removable screens (no grills)
- 32" x 80" pre-finished white maintenance-free insulated residential exterior door with large window, no grills, and heavy-duty aluminium self-storing storm door
- White vinyl 60" x 80" Thermopane patio door with screen (no grills)

### Insulation

- Ceilings: R-12 Owens Corning pink fibreglass batt insulation
- Walls: R-8 Owens Corning pink fibreglass batt insulation
- Floors: R-12 Owens Corning pink fibreglass batt insulation

### Interior Décor Finish

- Eurobox style cabinetry with adjustable shelves, decorative crown moulding and toe kick on all kitchen cabinets
- Thermofoil bevelled edge cabinet doors with concealed hinges
- Freestanding entertainment cabinet with space for an optional electric fireplace
- Freestanding entertainment cabinet in 21-4954-2 bedroom # 2
- Premium laminate kitchen counter with laminate front edging

- Roller glide-out metal drawer box hardware
- Durable maintenance friendly woodgrain vinyl flooring throughout (967M Heartwood ONLY)
- White colonial interior doors with satin stainless steel door hardware
- Floating nightstands in master bedroom
- Overhead cabinets above bed in master bedroom
- Drawers below bunk beds in second and third bedrooms
- Large wardrobe closet with mirrored sliding doors in master bedroom
- Custom designer drapery valances on removable rods
- Bunk matt covers in second and third bedrooms
- Vertical blinds with valance at patio door

**NOTE:** After Hours trim package with white kitchen & bathroom cabinetry ONLY .

**Single Units Include:** Stainless appliances, 4 bar stools, sofa & stationary chair in same upholstery (2 chairs in 21-4952-1), coffee table, end table and lamp.

**Units with Additions Include:** Stainless appliances, 3 bar stools, 5 pc. dinette set, sofa & stationary chair in same upholstery, coffee table, end table and lamp.

### NORTHLANDER WARRANTY

- 1-year product warranty, factory to consumer via dealer
- 5-year limited warranty for components and performance relating to structural integrity, weather penetration, electrical distribution system, plumbing and heating delivery systems, window and door performance



All Park Models manufactured by Northlander Industries are constructed in compliance with the stringent standards of the C.S.A.-Z241 Park Model Standard

The manufacturer reserves the right to improve or modify the product, without notice or obligation, which may change materials, equipment, specifications or designs. Information contained herein is from the latest data available at the time of printing. Photographs and descriptions may contain some optional extras.



## Well-Appointed Bath

This 3-piece bathroom features one-piece tub surround, vanity with porcelain sink, and mirrored medicine cabinet.



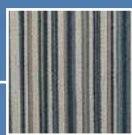
## Clever Bunk Design

Larger bottom bunk with storage drawers below offer your guests more space!

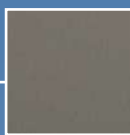


# 2021 décor PACKAGES

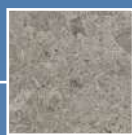
## Denim Dreams



Chair & Toss



Sofa



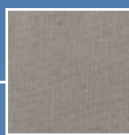
Counter



FX Counter



Main  
Valance



Main Side  
Panels



Duvet &  
Bunkspread

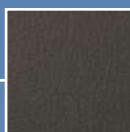


Bed Skirt &  
Pillow  
Shams

## Platinum Slate



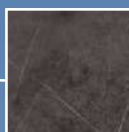
Chair & Toss



Sofa



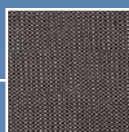
Counter



FX Counter



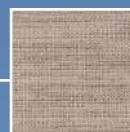
Main  
Valance



Main Side  
Panels



Duvet &  
Bunkspread

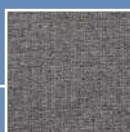


Bed Skirt &  
Pillow  
Shams

## Steel Storm\*



Chair & Toss



Sofa



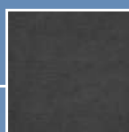
Counter



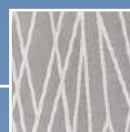
FX Counter



Main  
Valance



Main Side  
Panels



Duvet &  
Bunkspread

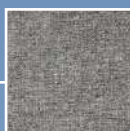


Bed Skirt &  
Pillow  
Shams

## Tropic River\*



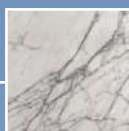
Chair & Toss



Sofa



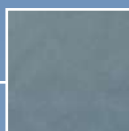
Counter



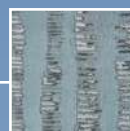
FX Counter



Main  
Valance



Main Side  
Panels

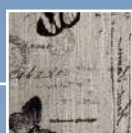


Duvet &  
Bunkspread

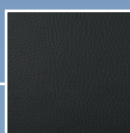


Bed Skirt &  
Pillow  
Shams

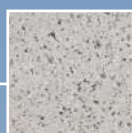
## Vintage Ink\*



Chair & Toss



Sofa



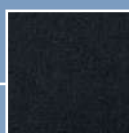
Counter



FX Counter



Main  
Valance



Main Side  
Panels



Duvet &  
Bunkspread

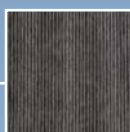


Bed Skirt &  
Pillow  
Shams

## Whimsy Mist



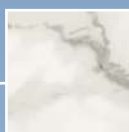
Chair & Toss



Sofa



Counter



FX Counter



Main  
Valance



Main Side  
Panels



Duvet &  
Bunkspread



Bed Skirt &  
Pillow  
Shams

## Wall Panels



Norwich  
Pearl\*



Aged  
Velvet

## Cabinetry



Urban



After Hours\*



White\*

## Vinyl Flooring



970E  
Limeoak



966M  
Idaho



967M  
Heartwood\*



669D  
Forest Oak

\*Available in Reflection Model.  
See Note on Page 31 for décor options.

Photos in this brochure show optional items, and colours in photos and swatches may vary from actual colours.

Designed and produced by  
Grafiks Marketing & Communications  
[www.grafiks.com](http://www.grafiks.com)

**NORTHLANDER**  
INDUSTRIES

165 Thames Rd. E., Hwy. 83, Exeter  
Ontario, Canada N0M 1S3  
T: 519-235-1530 • F: 519-235-2789  
[northlanderindustries.com](http://northlanderindustries.com)

