

MANUFACTURED HOMES



 SINCE 1964
NORTHLANDER
INDUSTRIES

WELCOME to the *Extraordinary*


WHY CHOOSE A NORTHLANDER MANUFACTURED HOME?

Building a home inside of a factory allows the consumer multiple advantages. One of the major benefits is our construction is climate controlled through all four Canadian seasons. Our dedicated and skilled craftsmen work in an environment where they are not bothered by extreme weather conditions and can focus their energy on providing quality craftsmanship from start to finish. Northlander is a family owned and operated Canadian company and we provide an exceptional product to our customer. With this guarantee you can be assured that your manufactured home is constructed to meet or exceed the Ontario Building Code. Along with the flexibility of choosing interior décors, cabinet finishes and appliances it easily makes each custom built Northlander Manufactured Home a unique home. We could easily tell you to trust Northlander Industries to build your home, however, what that means is putting your trust in a company that has been constructing prefabricated buildings since 1964. Again, we have half a century worth of design ingenuity, experience and innovation which makes us an industry leader of prefabricated buildings.

So, to answer the question ... Northlander will build your new Manufactured Home with pride, integrity and trust. Turning your dreams into reality!







*“Your home
should tell the
story of who
you are, and be
a collection of
what you love.”*

-Nate Berkus

ASPIRE

Owning the perfect home is always a complicated aspiration for people. Some are looking for their first starter home and others are long time home owners looking to make life a little less complicated.

Whatever your situation, whatever your state of mind, whatever you desire, the ASPIRE is here to meet and even exceed your home ownership needs.

- Custom interior decor packages featuring luxurious cabinetry, and high-end décor creating a wonderful living environment!
- Upgrade your counter to experience the bold look with an FX series laminate countertop.
- Adjustable shelving inside Euro box custom cabinetry.
- Stainless steel double bowl sink with chrome single-lever faucet.
- Open concept living space blending kitchen and living areas together.
- Magnificent view of the outdoors through double or triple panel patio doors.

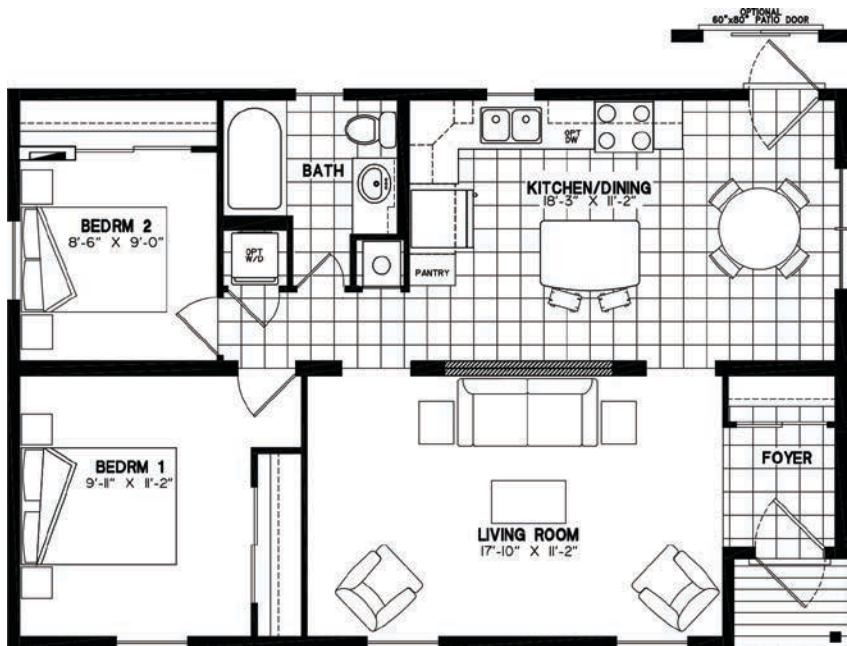




ASPIRE 3624-001

36'-0" x 24'-0" · 846 sq.ft.

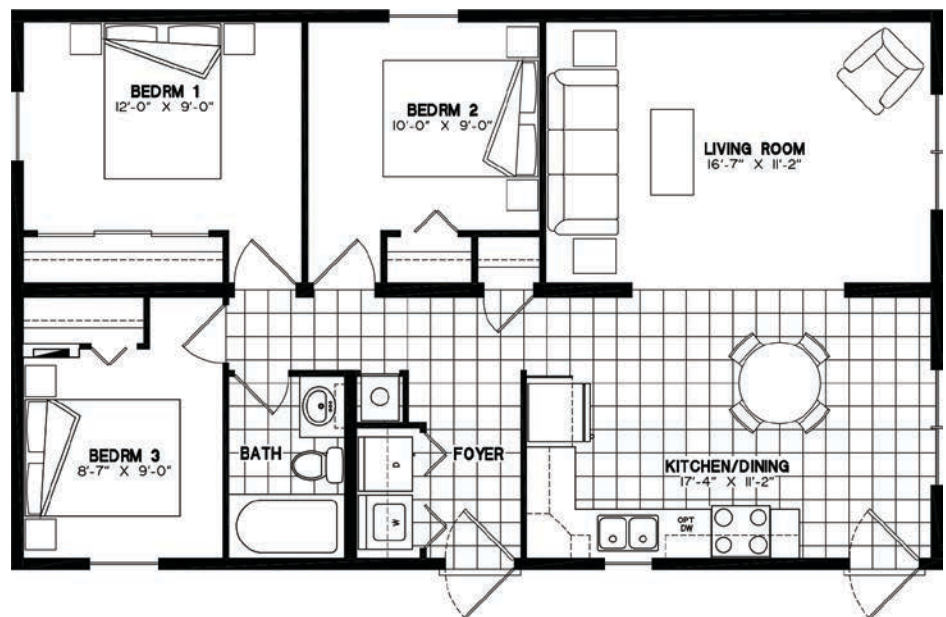
- 2 bedrooms
- 1 bathroom
- Sliding door closet in both bedrooms
- Fiberglass tub/shower combination
- Full size stacked washer/dryer
- Covered porch
- Optional patio door



ASPIRE 4024-007

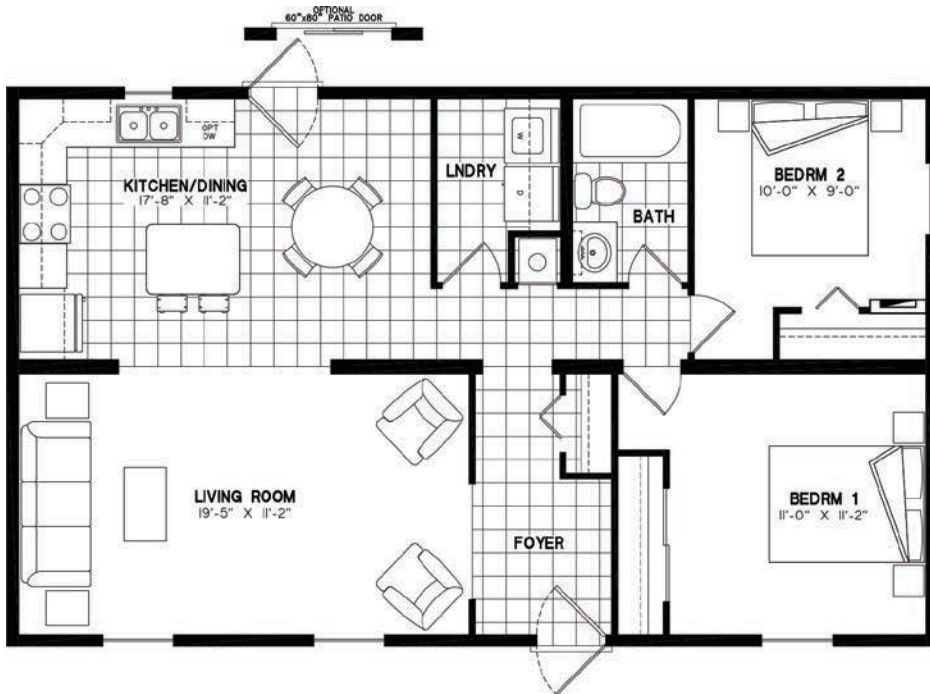
40'-0" x 24'-0" · 960 sq.ft.

- 3 bedrooms
- 1 bathroom
- Triple sliding door closet in master bedroom
- Fiberglass tub/shower
- Full size washer/dryer



ASPIRE 4024-005

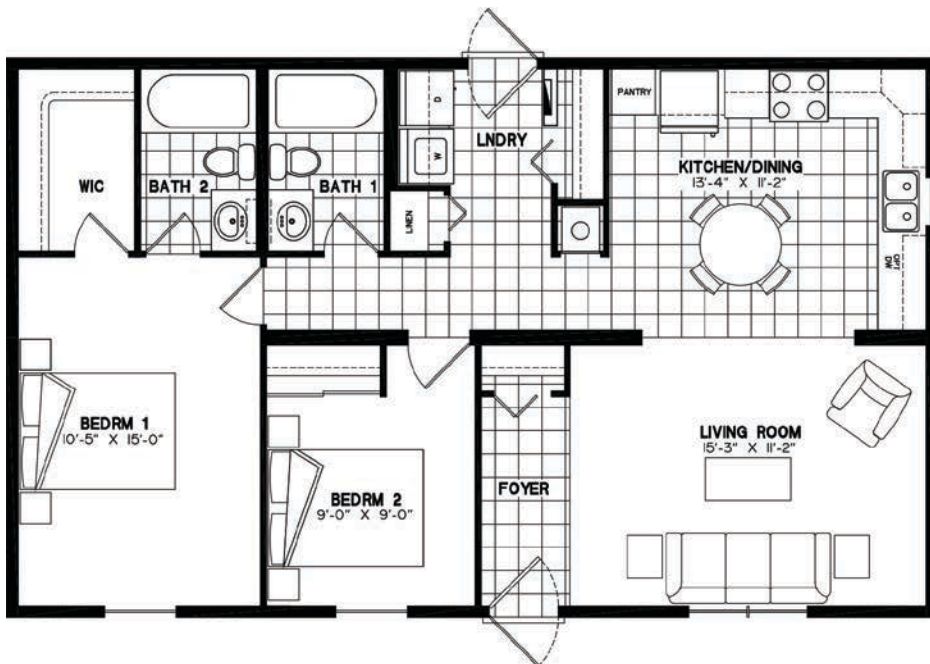
40'-0" x 24'-0" · 960 sq.ft.



- 2 bedrooms
- 1 bathroom
- Sliding door closet in master bedroom
- Fiberglass tub/shower combination
- Full size washer/dryer in separate laundry room
- Optional patio door

ASPIRE 4024-006

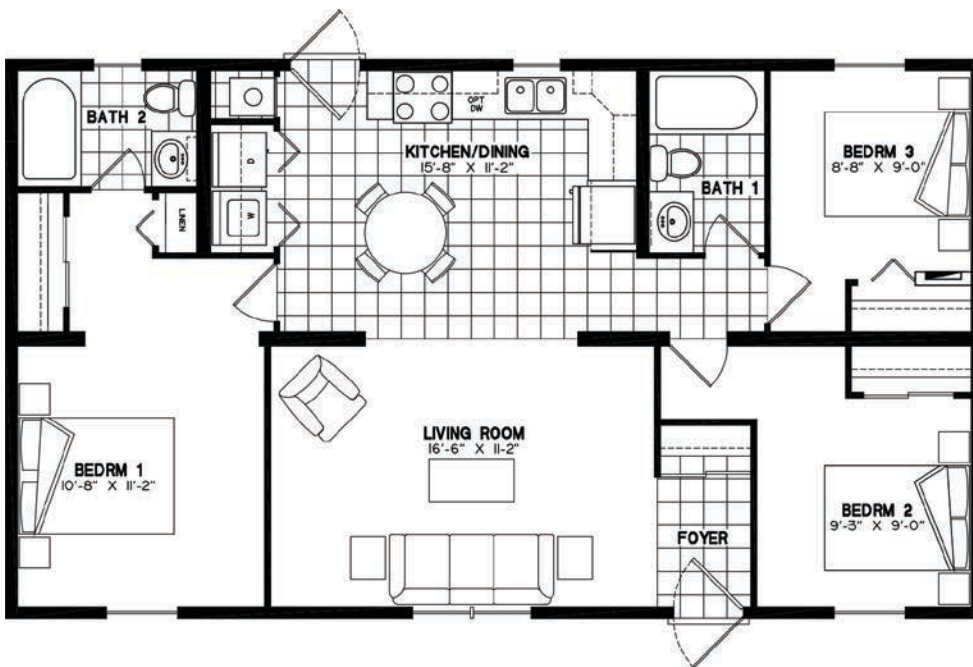
40'-0" x 24'-0" · 960 sq.ft.



- 2 bedrooms
- Main bath and ensuite
- Walk-in closet in master bedroom
- Fiberglass tub/shower combination in both bathrooms
- Full size washer/dryer
- Back entry

ASPIRE 4224-002

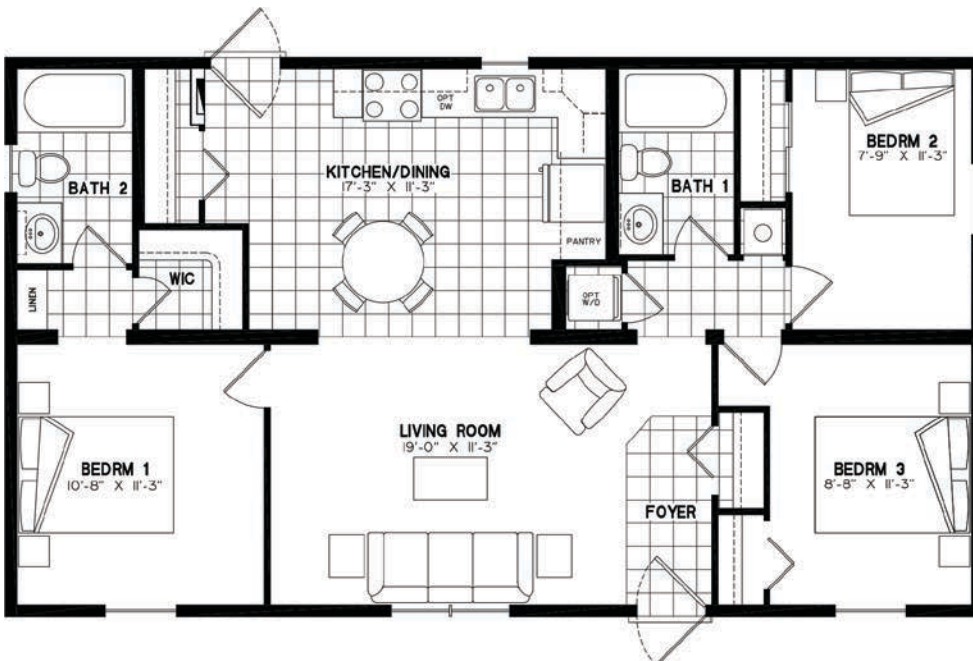
42'-0" x 24'-0" · 1008 sq.ft.



- 3 bedrooms
- Main bath and ensuite
- Sliding door closet in master bedroom
- Fiberglass tub/shower combination in both bathrooms
- full size washer/dryer

ASPIRE 4224-003

42'-0" x 24'-0" · 1008 sq.ft.



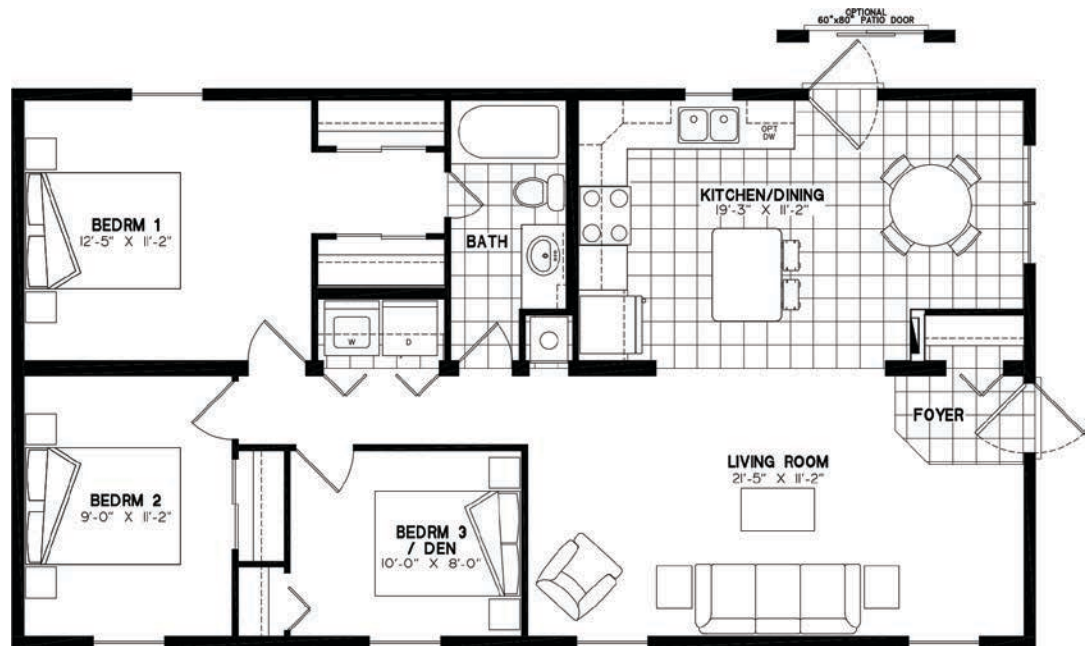
- 3 bedrooms
- Main bath and ensuite
- Sliding door closet in master bedroom
- Fiberglass tub/shower combination in both bathrooms
- full size washer/dryer



ASPIRE 4424-003

44'-0" x 24'-0" · 1056 sq.ft.

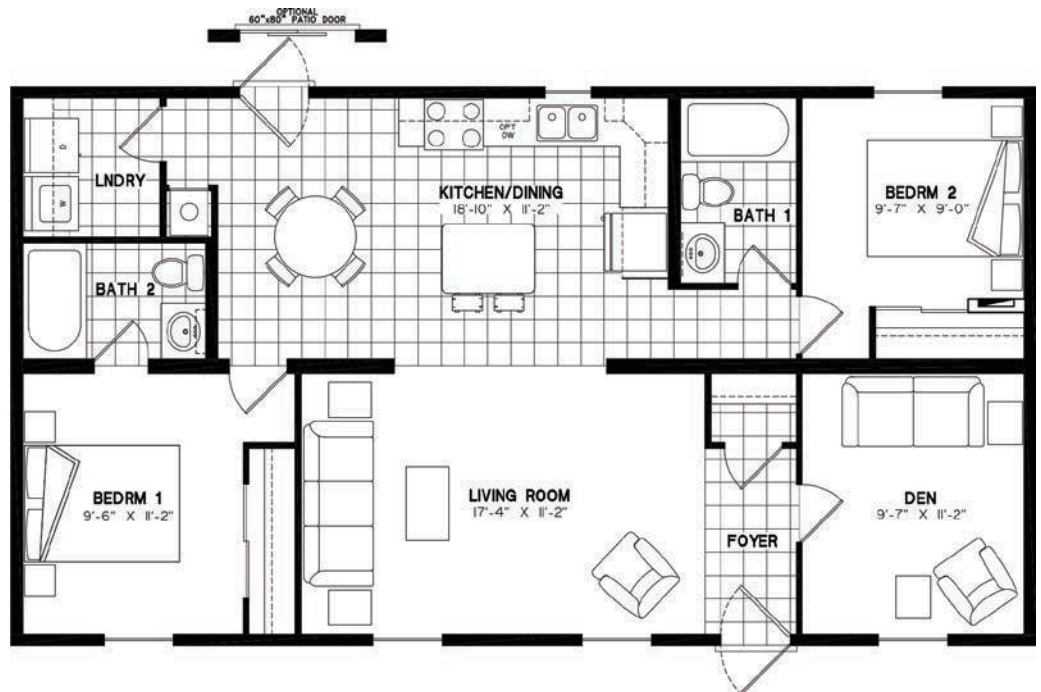
- 3 bedrooms
- 1 bathroom (access from master bedroom)
- His/her sliding door closet in master bedroom
- Fiberglass tub/shower combination
- Full size washer/dryer
- Side entry
- Optional patio door



ASPIRE 4424-004

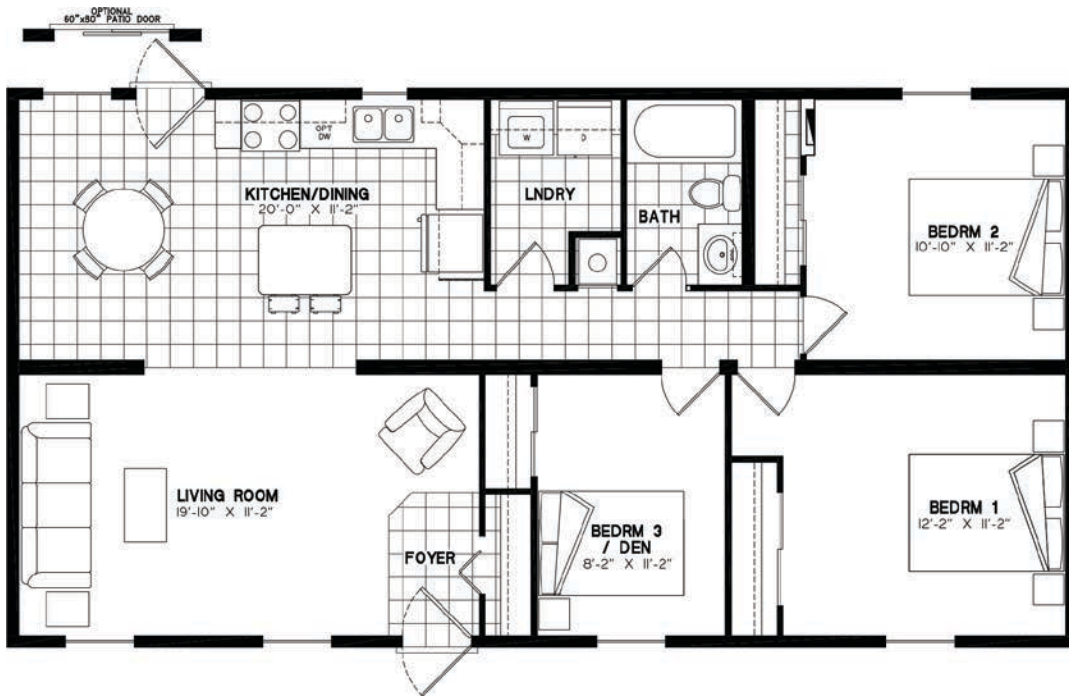
44'-0" x 24'-0" · 1056 sq.ft.

- 2 bedrooms
- Den
- Main bath and ensuite
- Sliding door closet in master bedroom
- Fiberglass tub/shower combination in both bathrooms
- Full size washer/dryer in separate laundry room
- Optional patio door



ASPIRE 4624-002

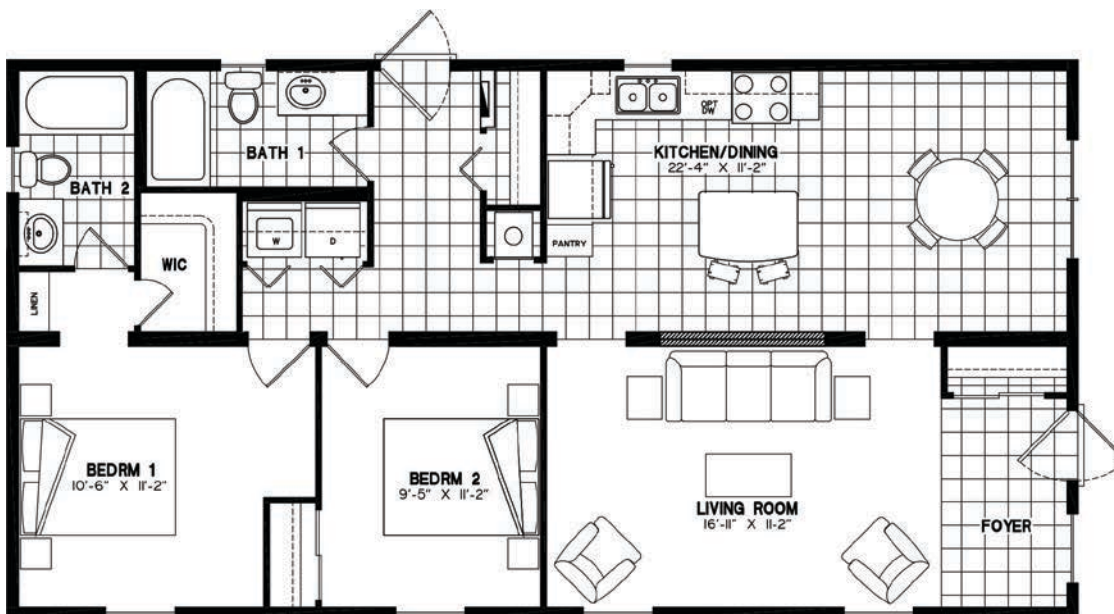
46'-0" x 24'-0" · 1104 sq.ft.



- 3 bedrooms
- 1 bathroom
- Sliding door closet in master bedroom
- Fiberglass tub/shower combination
- Full size washer/dryer in separate laundry room
- Optional patio door

ASPIRE 4624-003

46'-0" x 24'-0" · 1104 sq.ft.

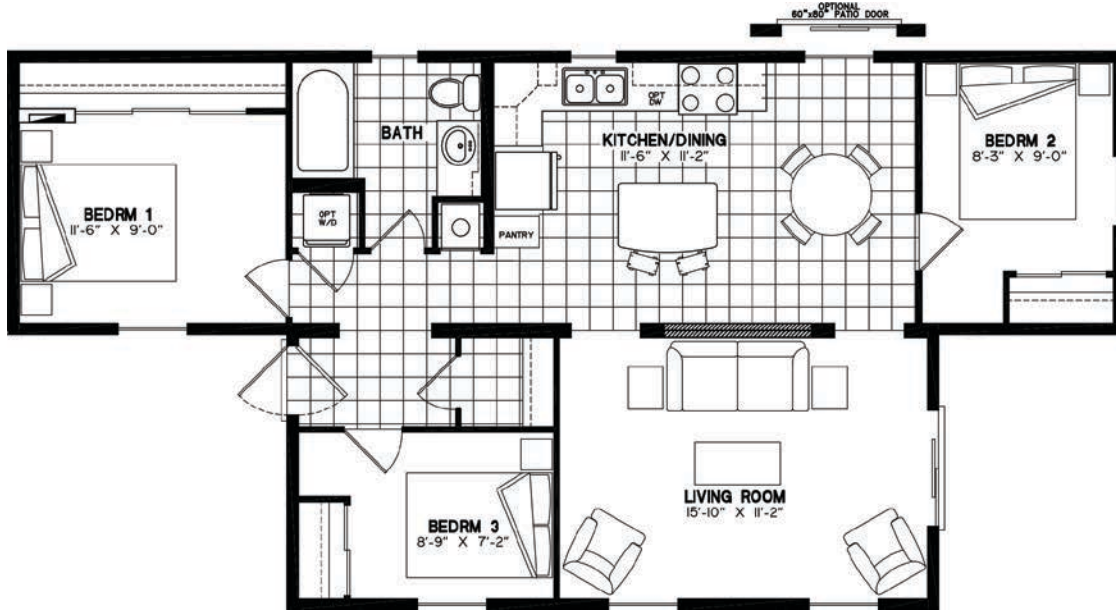


- 2 bedrooms
- Main bath and ensuite
- Walk-in closet in master bedroom
- Fiberglass tub/shower combination in both bathrooms
- Full size washer/dryer
- Side entry
- Half wall opening detail between kitchen and living room
- Back entrance

ASPIRE 4824-001

48'-0" x 12'-0" · 28'-0" x 12'-0" · 912 sq.ft.

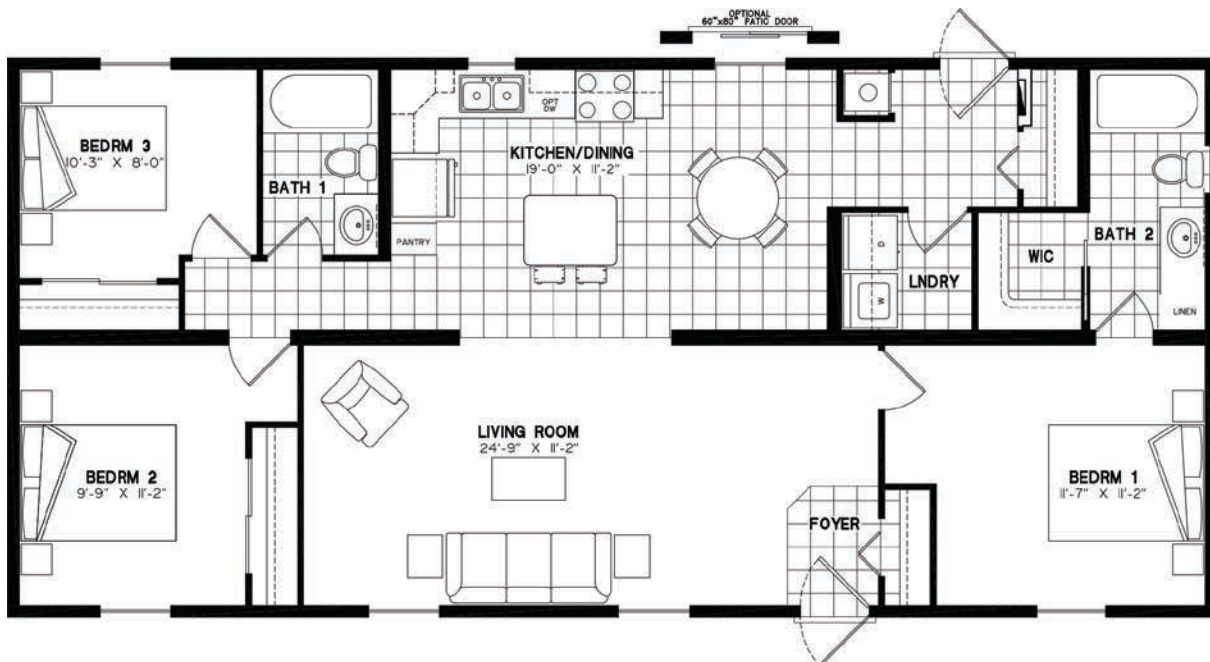
- 3 bedrooms
- 1 bathroom
- Sliding closet in master bedroom
- Fiberglass tub/shower combination
- Full size stacked washer/dryer
- Optional patio door
- Optional covered porch on living room side

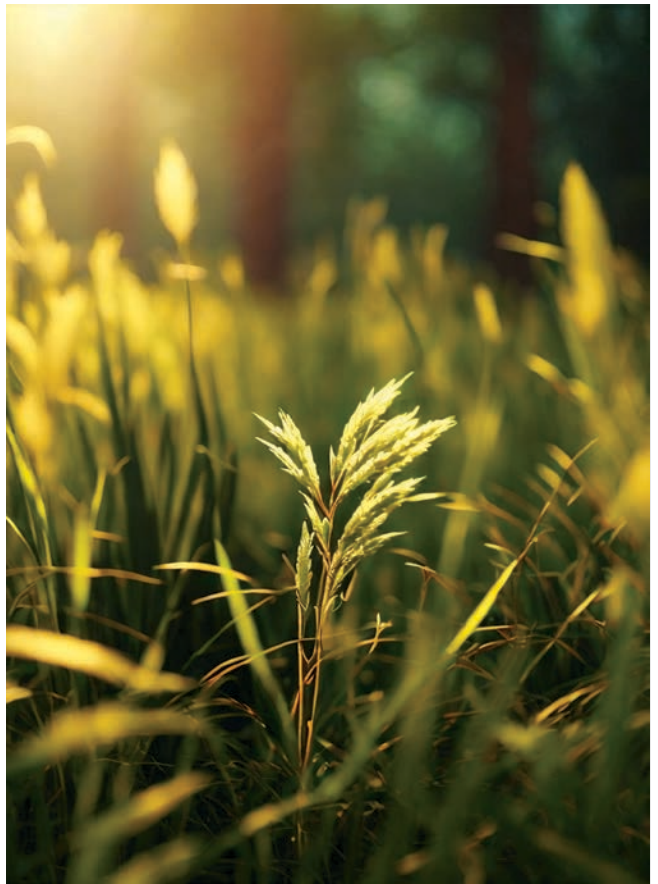


ASPIRE 5224-001

52'-0" x 24'-0" · 1248 sq.ft.

- 3 bedrooms
- Main bath and ensuite
- Walk-in closet in master bedroom
- Fiberglass tub/shower combination in both bathrooms
- Full size washer/dryer in separate laundry room
- Optional patio door





SPECIFICATIONS

FRAMES AND FLOORS

- Heavy duty steel frame undercarriage with detachable hitch
- Seamless reinforced fibremesh sealant underbelly between chassis and floor
- 2" x 10" floor joists on 16" centres
- 5/8" Dri Deck tongue-and-groove plywood subflooring glued and screw-nailed to floor joist
- Heat ducts within insulated floor cavity. Registers run to outside wall for optimum heating and comfort
- 1" main gas line with outlet

SIDEWALLS

- 2" x 6" studs on 16" centres
- 90" high sidewalls with unique belt rail sidewall stiffeners
- 6 mil. poly vapour barrier
- 7/16" exterior sheathing
- Pre-finished vinyl interior wallboard
- Tyvek exterior building wrap
- Horizontal exterior vinyl siding

ROOF AND CEILING

- Pre-engineered 3.5/12 roof trusses on 16" centres (88 lbs. per sq.ft. snow load) with 10 1/2" overhangs
- 7/16" roof sheathing
- 6 mil. poly vapour barrier
- Ice and Water shield protection at the eave with shingle underlayment on remainder of roof
- Self sealing fiberglass asphalt architectural shingles (limited lifetime warranty)
- Vented attic space to eliminate moisture and heat build up
- Continuous vinyl vented soffit and aluminum fascia
- Expansive vaulted ceiling throughout entire unit
- Seaspray drywall ceiling

PLUMBING

- Heatlink cross-linked polyethylene water lines and fittings
- 40-gallon, 240-volt electric water heater

- 4.8-litre ultra-low-flush water saver toilet with insulated tank
- Designer vanity with a porcelain sink
- Deluxe one-piece fiberglass tub/shower combination
- Pressure balanced tub & shower faucets
- Chrome high-arch single lever kitchen faucet with pull-out spray
- Chrome dual lever vanity faucet
- Chrome towel bar and tissue holder
- Double compartment stainless steel kitchen sink
- Plumb and wire for washer and 220 volt dryer
- Plumb and wire for dishwasher
- Frost free exterior water tap

ELECTRICAL AND HEATING

- 100 amp - 48 circuit hydro service with intake through floor
- Prepared for central air conditioner
- 45,000 BTU extra high efficiency gas furnace with electronic ignition and wall thermostat
- HRV air exchanger providing an optimum balanced ventilation system
- 120 volt heat tape junction box
- Electric strobe, smoke & carbon monoxide detector in living area
- Electric strobe & smoke detector in all bedrooms
- Decora-style light switches receptacles
- 50-cfm bathroom exhaust fan
- Deluxe two speed range hood with light (white)
- Interior GFCI receptacle in bathroom and kitchen as required
- Tamper proof receptacles through-out
- Wired according to ESA specifications
- Exterior GFCI receptacle at entrance doors
- Exterior coach light at entrance doors
- Door Bell
- LED pendent lights over island
- LED residential interior light fixtures and recessed LED pot lights in kitchen, living room and bathrooms
- TV access boxes in master bedroom and living room
- USB receptacle in kitchen and bedroom 1

WINDOWS AND DOORS

- White vinyl Northstar Thermopane single hung (tilt to clean) windows with Low 'E' glass, 3 1/2" brick mold, removable screens (no grills), and insulating foam around window frames
- 36" x 80" pre-finished white maintenance free insulated residential exterior door with large window, heavy duty aluminum self-storing storm door, stainless steel door knob and dead bolt
- White vinyl Northstar Thermopane patio door with Low 'E' glass, 3 1/2" brick mold and screen (no grills)

INSULATION - ZONE 1

- Ceiling: R-60 Owens Corning pink fiberglass batt insulation
- Walls: R-22 Owens Corning pink fiberglass batt insulation
- Floors: R-31 Owens Corning pink fiberglass batt insulation

INTERIOR DECOR FINISH

- Eurobox style cabinetry with adjustable shelves, decorative crown moulding and toe kick on all kitchen cabinets
- Thermofoil shaker style cabinet doors with concealed hinges
- Premium laminate kitchen and bathroom counters with laminate front edging
- Flex-tile decorative backsplash in kitchen and bathrooms
- Roller glide-out metal drawer box hardware
- Medicine cabinet with mirror
- Durable maintenance friendly woodgrain vinyl flooring throughout
- White 2 panel interior doors with satin stainless door handles
- Ceiling crown mouldings throughout with casing on windows and doors

OPTIONAL INTERIOR FINISH

- Mirrored closet doors
- Custom designer drapery package

NORTHLANDER WARRANTY

- 1- year product warranty, factory to consumer via dealer.
- 5- year limited warranty for components and performance relating to structural integrity, weather penetration, electrical distribution system, plumbing and heating delivery systems, window and door performance.

All Modular homes manufactured by Northlander Industries are constructed in compliance to the stringent requirements of the C.S.A Standard A-277, National Building Code of Canada and Provincial Amendments.

The manufacturer reserves the right to improve or modify the product, without notice or obligation, which may change materials, equipment, specifications or designs. Information contained herein is from the latest data available at the time of printing. Photographs and descriptions may contain some optional extras.





TRADITIONAL

We know the value of providing a solid basis for your family to grow and prosper. A family is built on its traditions and thrives in maintaining them. Here at Northlander we celebrate the fact that we are family owned and employ many generations of families. All these families are ready to provide your family with a TRADITIONAL Manufactured Home. These homes are unique in that they are fully equipped and are self-contained to one level. Creating a warm atmosphere inside its walls, we will ensure a place to celebrate many more years of your family traditions.

- Each home is unique! Northlander is committed to providing you with award winning design and craftsmanship, with extraordinary attention to detail!
- Open concept blending living areas together.
- Consider upgrading your kitchen with custom countertops, for maximum counter space and deluxe ceramic tile backsplash.
- High end stainless steel appliances and range hood.
- Optional entertainment cabinet with built-in fireplace.
- Spacious 3 piece bath with all the amenities.

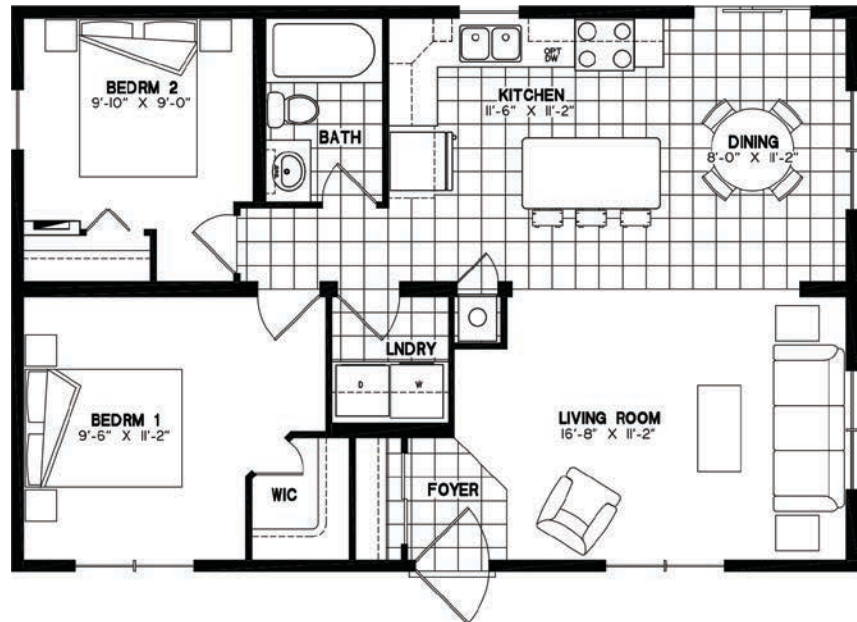




TRADITIONAL 3624-012

36'-0" x 24'-0" · 846 sq.ft.

- 2 bedrooms
- 1 bathroom
- Walk-in closet in master bedroom
- Fiberglass tub/shower combination
- Front load washer/dryer in separate laundry room



TRADITIONAL 4426-016

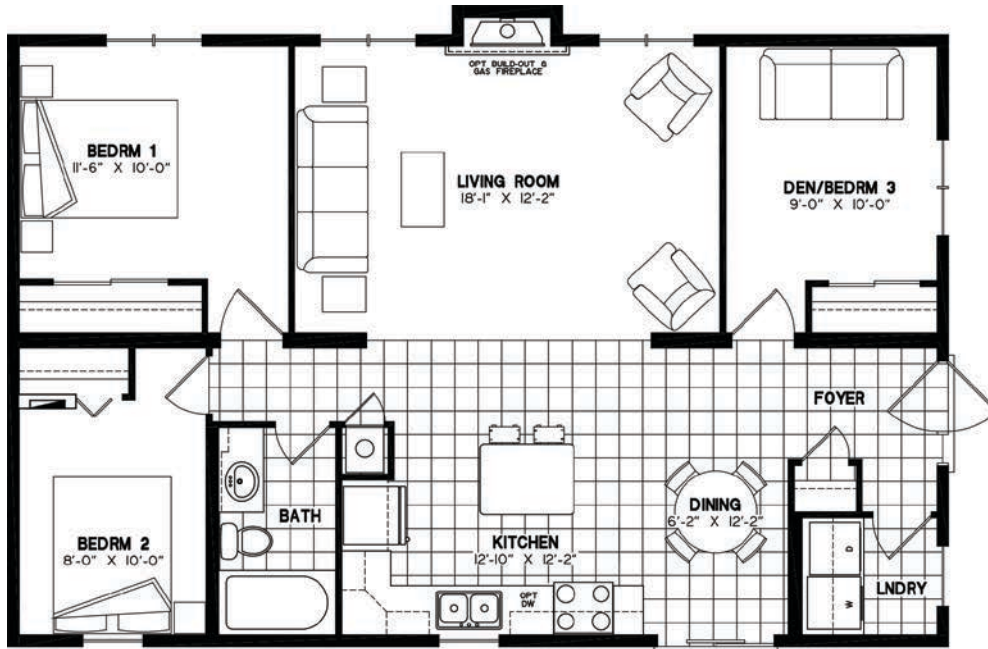
44'-0" x 26'-0" · 1139 sq.ft.

- 2 bedrooms
- Den
- Main bath and ensuite
- Triple sliding closet in master bedroom
- Fiberglass tub/shower combination in main bathroom
- Front load washer/dryer in separate laundry room



TRADITIONAL 4026-007

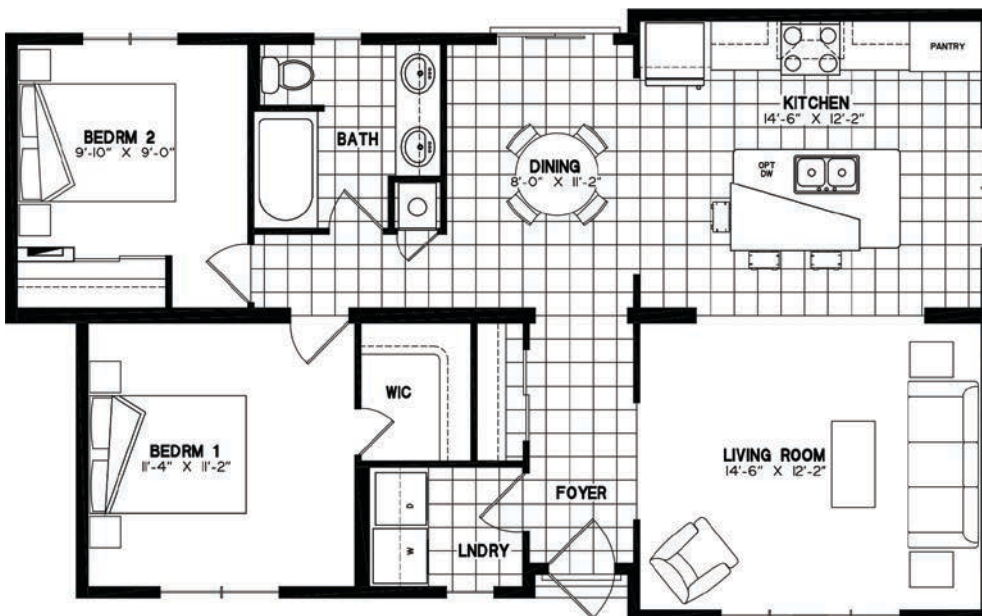
40'-0" x 26'-0" · 1045 sq.ft.



- 2 bedrooms
- Den/3rd bedroom
- 1 bathroom
- Double sliding door closet in master bedroom
- Fiberglass tub/shower combination
- Front load washer/dryer in separate laundry room
- Optional build-out with gas fireplace
- Side entry

TRADITIONAL 4224-012

42'-0" x 24'-0" · 999 sq.ft.

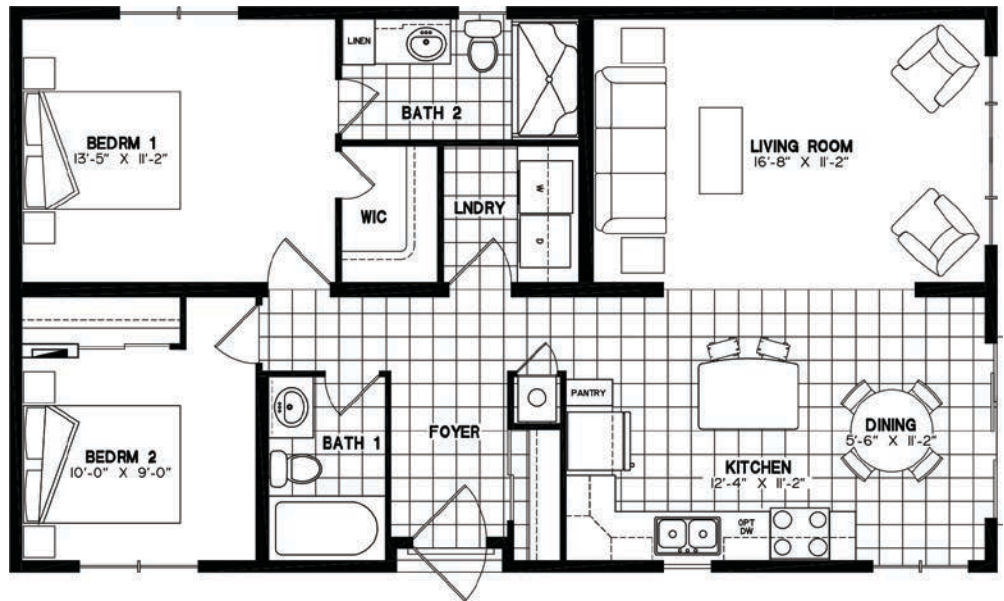


- 2 bedrooms
- 1 bathroom with his/her sinks
- walk-in closet in master bedroom
- Fiberglass tub/shower combination
- Front load washer/dryer in separate laundry room
- Island with raised breakfast bar
- Optional interior vault in kitchen and living room
- Optional box-bay build-out
- Optional dormer roof

TRADITIONAL 4224-013

42'-0" x 24'-0" · 1004 sq.ft.

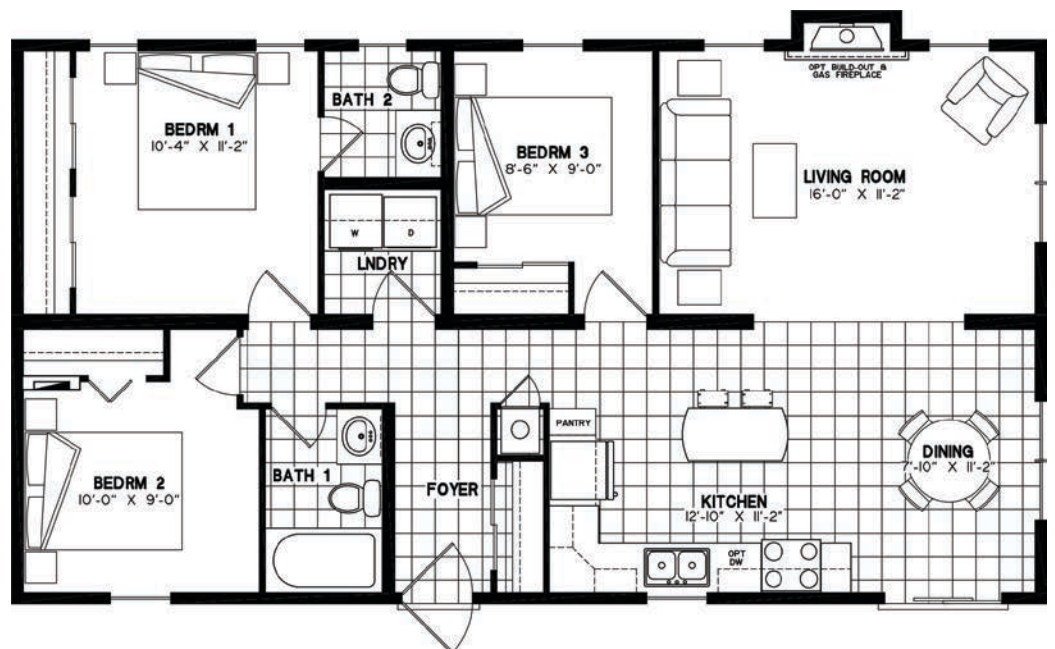
- 2 bedrooms
- Main bath and ensuite
- Walk-in closet in master bedroom
- Fiberglass tub/shower combination in both bathrooms
- Front load washer/dryer in separate laundry room



TRADITIONAL 4424-028

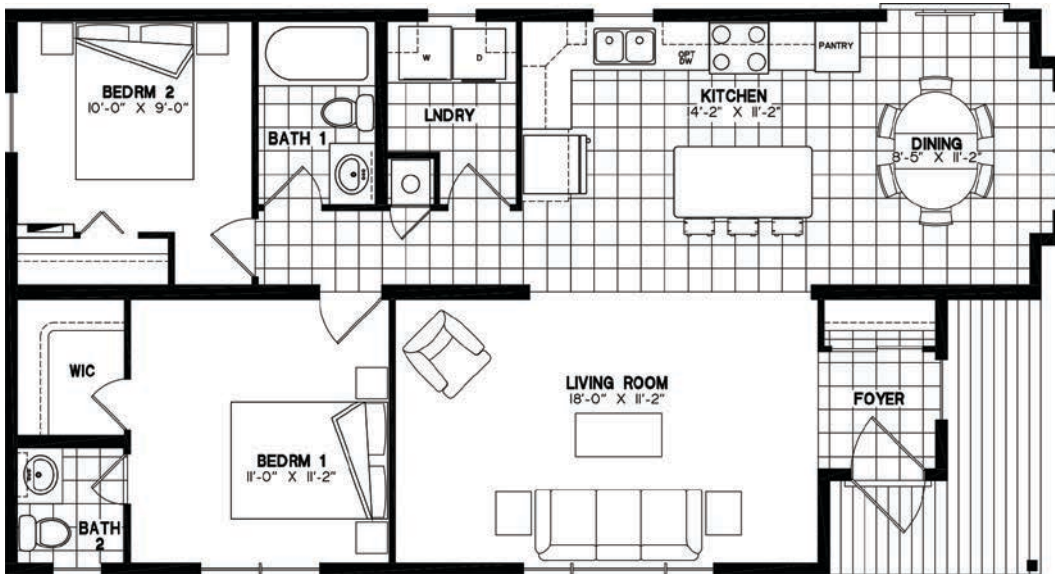
44'-0" x 24'-0" · 1061 sq.ft.

- 3 bedrooms
- Main bath and ensuite
- His/her closets in master bedroom
- Fiberglass tub/shower combination in main bathroom
- Front load washer/dryer in separate laundry room
- Optional build-out with gas fireplace



TRADITIONAL 4424-029

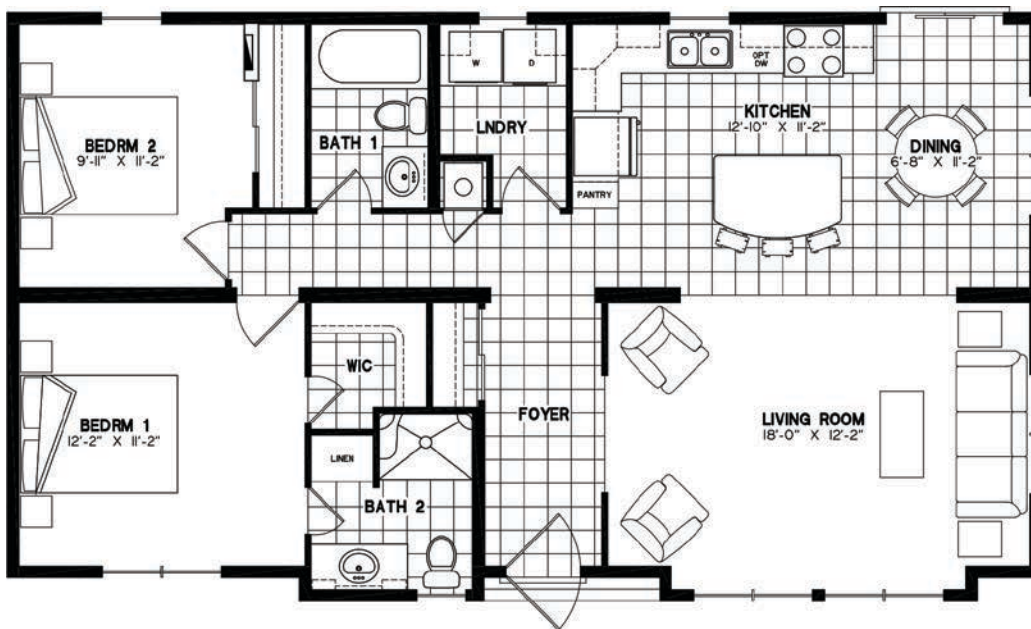
44'-0" x 24'-0" · 988 sq.ft.



- 2 bedrooms
- Main bath and ensuite
- Walk-in closet in master bedroom
- Fiberglass tub/shower combination in main bathroom
- Front load washer/dryer in separate laundry room
- Covered porch

TRADITIONAL 4424-030

44'-0" x 24'-0" · 1078 sq.ft.



- 2 bedrooms
- Main bath and ensuite
- Walk-in closet in master bedroom
- Fiberglass tub/shower combination in main bathroom
- Front load washer/dryer in separate laundry room

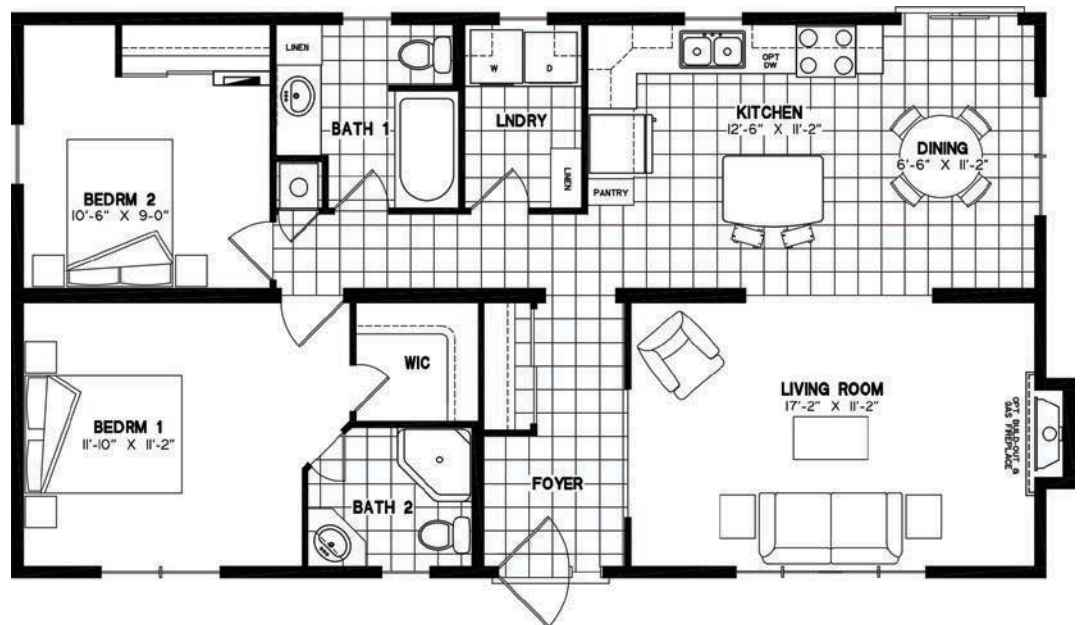


All renderings/pictures shown are for illustration purposes only. Optional features that are not standard may be shown.

TRADITIONAL 4424-032

44'-0" x 24'-0" · 1061 sq.ft.

- 2 bedrooms
- Main bath and ensuite
- Walk-in closet in master bedroom
- Fiberglass tub/shower combination
- Front load washer/dryer in separate laundry room
- Optional build-out with gas fireplace

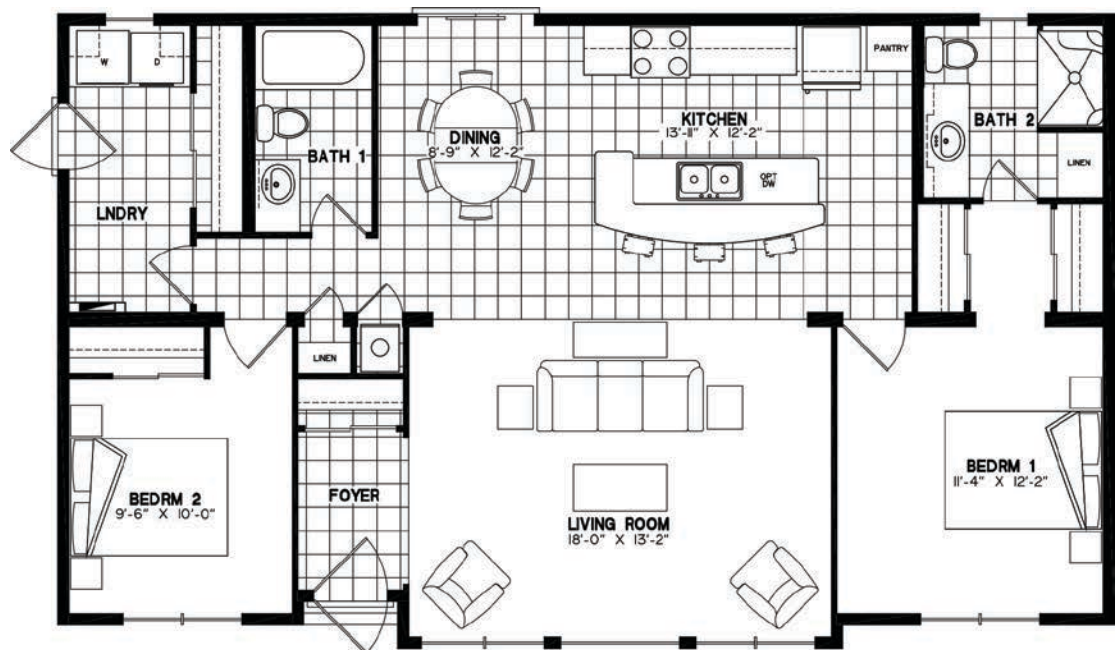




TRADITIONAL 4526-012

45'-0" x 26'-0" · 1185 sq.ft.

- 2 bedrooms
- Main bath and ensuite
- His/her closet in master bedroom
- Fiberglass tub/shower combination in main bathroom
- Front load washer/dryer in separate laundry room
- Island with raised breakfast bar
- Extra exterior door from laundry
- Optional dormer roof and windows
- Optional interior vault



TRADITIONAL 4426-017

44'-0" x 26'-0" · 1139 sq.ft.

- 2 bedrooms
- Main bath and ensuite
- Walk-in closet in master bedroom
- Fiberglass tub/shower combination in both bathrooms
- Front load washer/dryer in separate laundry room
- 7'-6" wide patio door off dining room



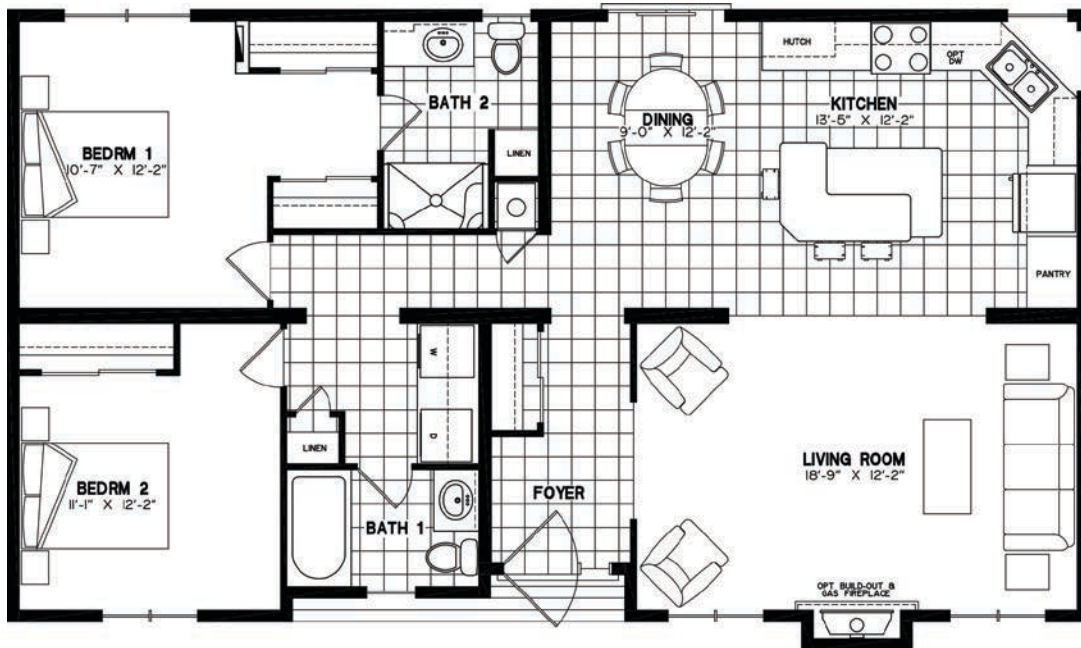


TRADITIONAL 4626-010

46'-0" x 26'-0" · 1181 sq.ft.

- 2 bedrooms
- Main bath and ensuite
- His/her closet in master bedroom
- Fiberglass tub/shower combination in main bathroom

- Front load washer/dryer
- Optional build-out with gas fireplace
- Island with raised breakfast bar
- Recessed covered entry

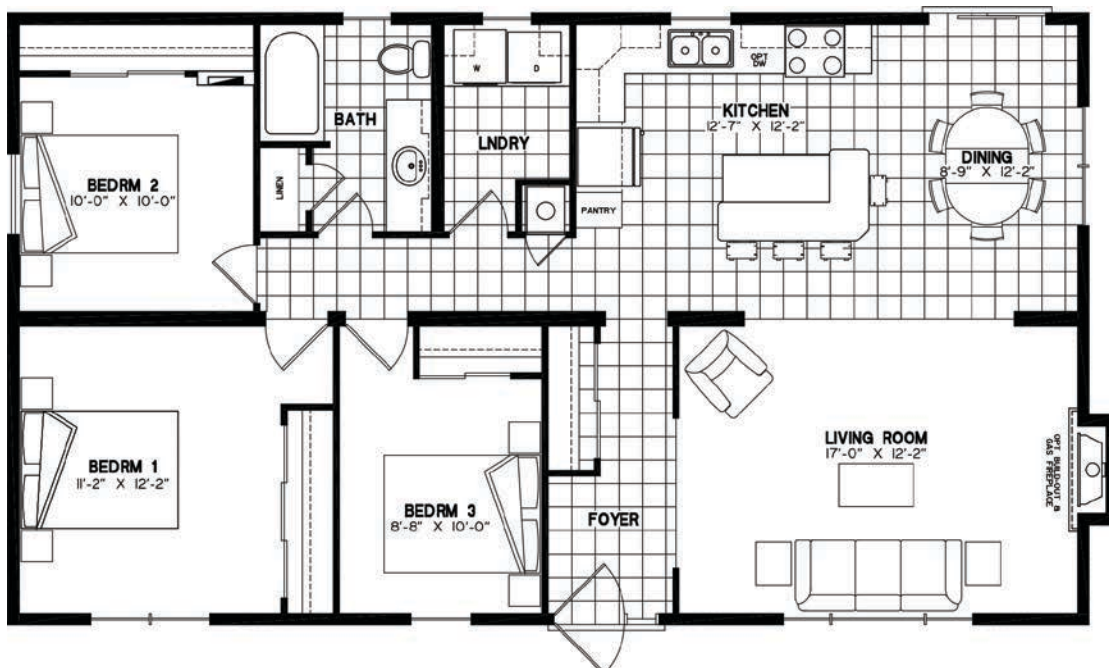


TRADITIONAL 4626-011

46'-0" x 26'-0" · 1201 sq.ft.

- 3 bedrooms
- 1 bathroom
- Triple sliding door closet in master bedroom
- Fiberglass tub/shower combination in main bathroom

- Front load washer/dryer in separate laundry room
- Optional build-out with gas fireplace
- Island with raised breakfast bar

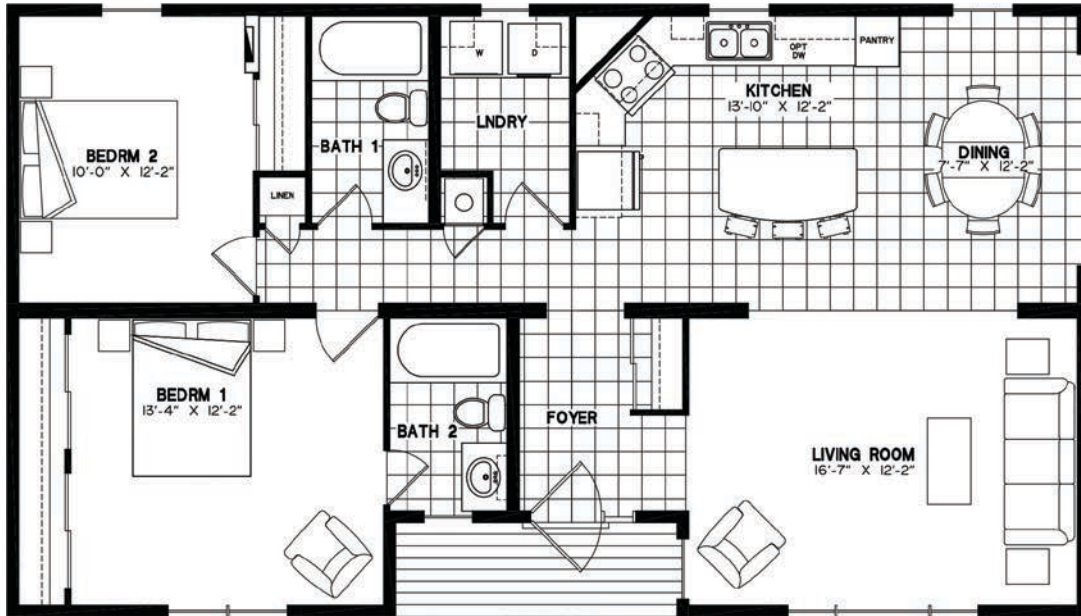




TRADITIONAL 4626-012

46'-0" x 26'-0" · 1148 sq.ft.

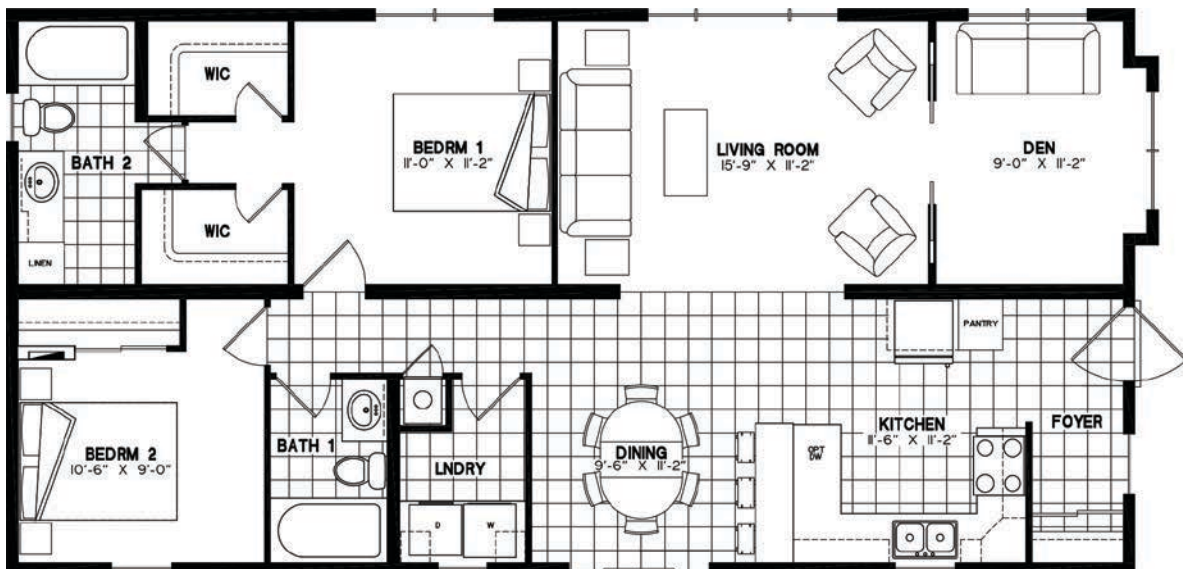
- 2 bedrooms
- Main bath and ensuite
- His/her closet in master bedroom
- Fiberglass tub/shower combination in main bathroom
- Front load washer/dryer in separate laundry room
- Covered entry



TRADITIONAL 4824-005

48'-0" x 24'-0" · 1160 sq.ft.

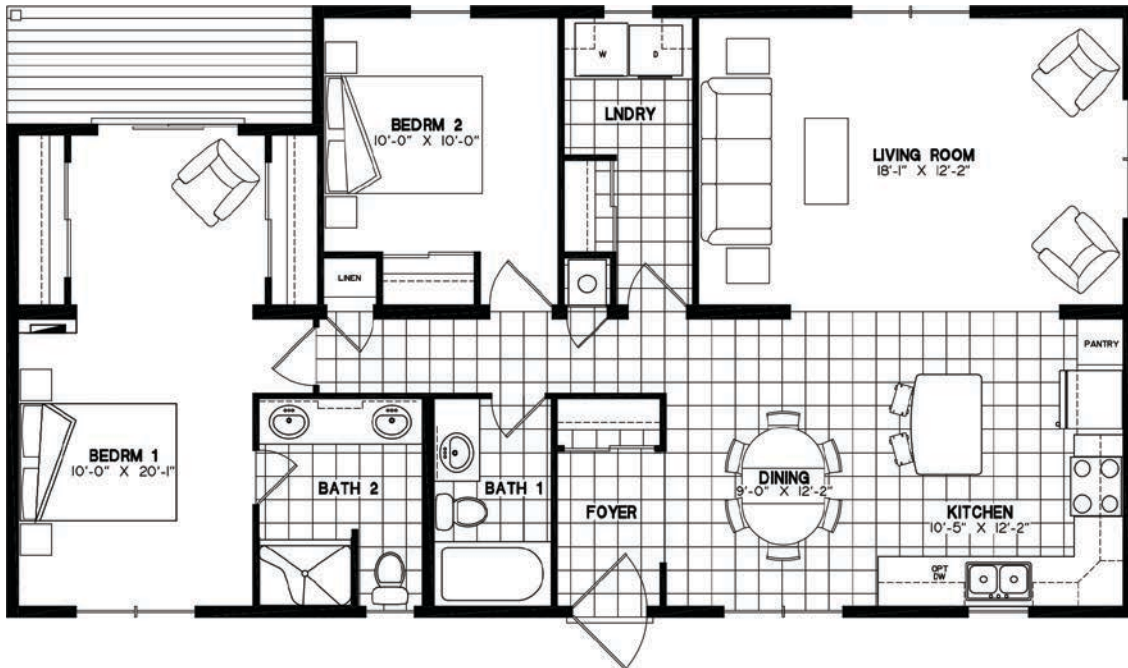
- 2 bedrooms
- Den
- Main bath and ensuite
- His/her closet in master bedroom
- Fiberglass tub/shower combination in main bathroom
- Front load washer/dryer
- Raised breakfast bar



TRADITIONAL 4826-032

48'-0" x 26'-0" · 1183 sq.ft.

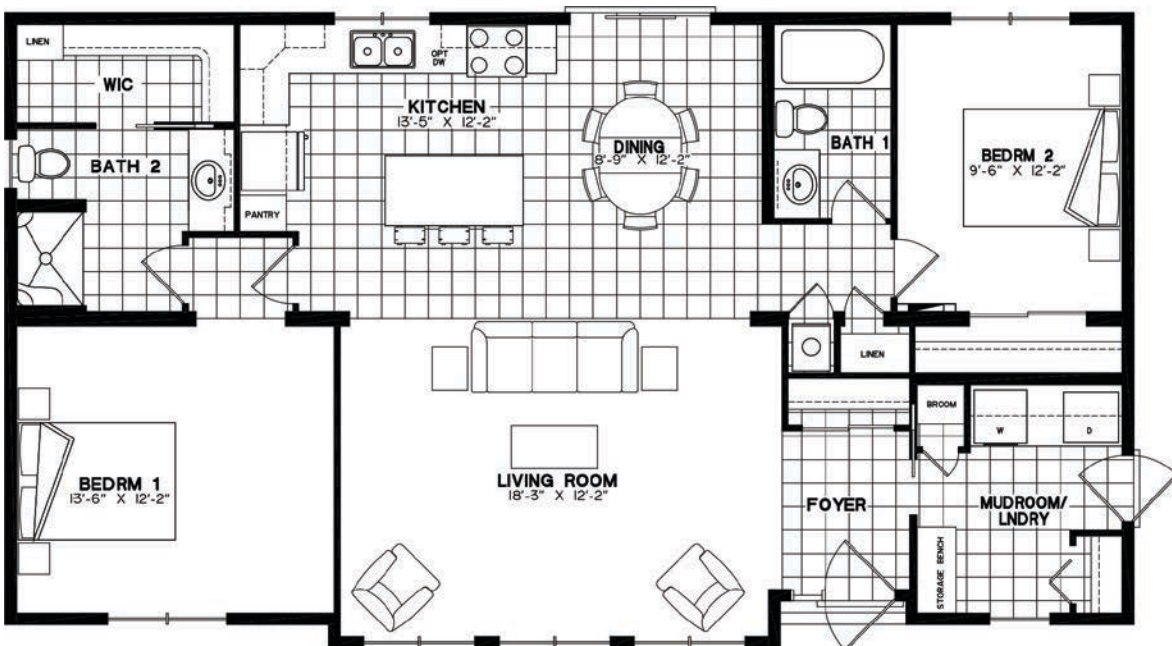
- 2 bedrooms
- Main bath and ensuite
- His/her closet in master bedroom
- Fiberglass tub/shower combination in main bathroom
- Covered porch off master bedroom
- Front load washer/dryer in separate laundry room
- Optional dormer roof



TRADITIONAL 4826-033

48'-0" x 26'-0" · 1261 sq.ft.

- 2 bedrooms
- Main bath and ensuite
- Walk-in closet in master bedroom
- Fiberglass tub/shower combination in main bathroom
- Laundry room featuring front load washer/dryer, broom closet, closet, and storage bench with hooks



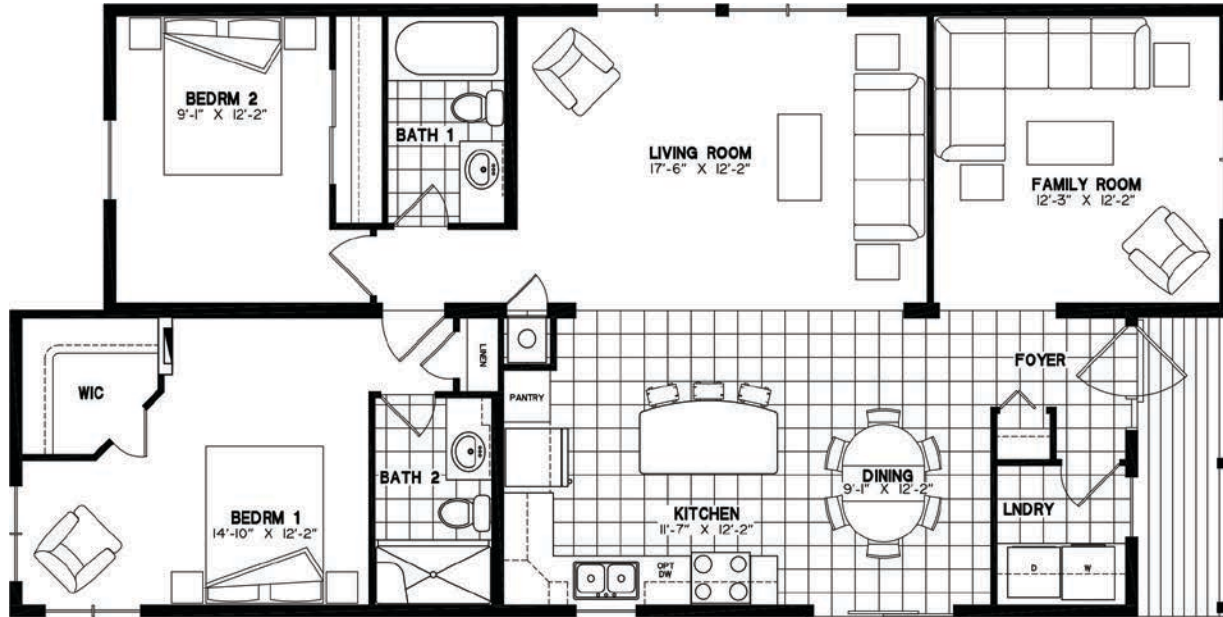


TRADITIONAL 5226-010

52'-0" x 26'-0" · 1249 sq.ft.

- 2 bedrooms
- Family room
- Main bath and ensuite
- Walk-in closet in master bedroom

- Fiberglass tub/shower combination in main bathroom
- Front load washer/dryer

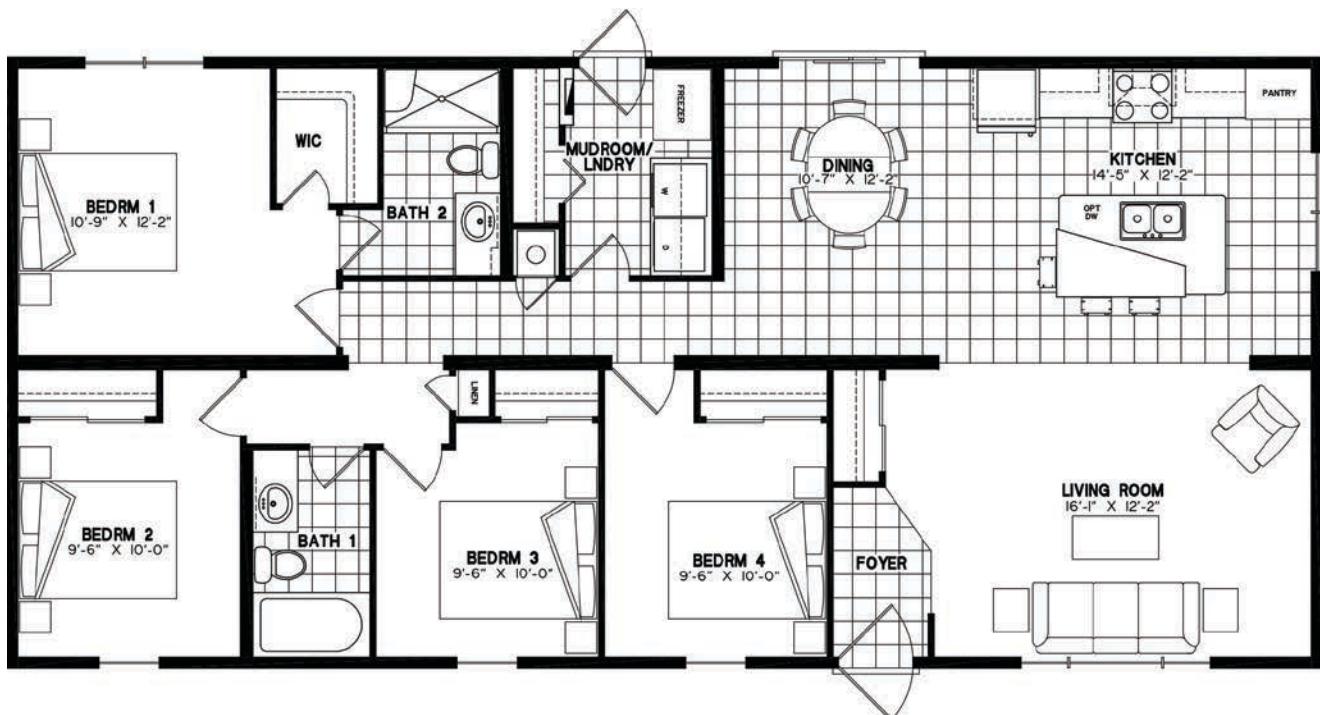


TRADITIONAL 5626-001

56'-0" x 26'-0" · 1456 sq.ft.

- 4 bedrooms
- Main bath and ensuite
- Walk-in closet in master bedroom
- Fiberglass tub/shower combination in main bathroom

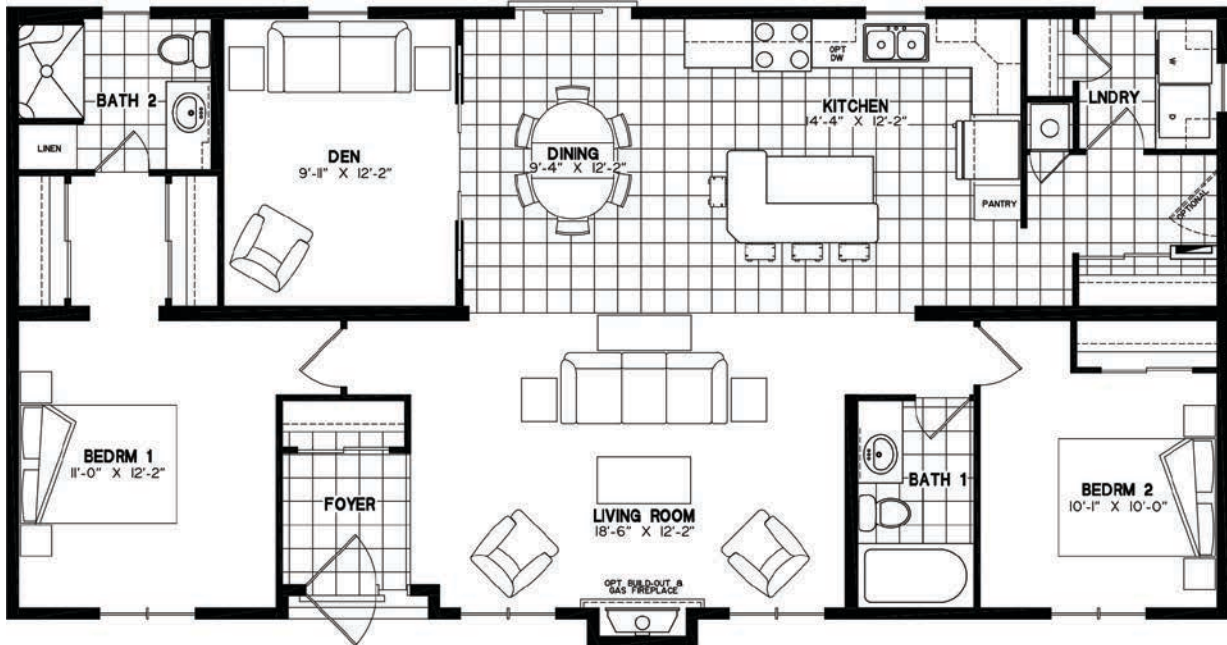
- Front load washer/dryer
- Island with raised breakfast bar



TRADITIONAL 5226-011

52'-0" x 26'-0" · 1351 sq.ft.

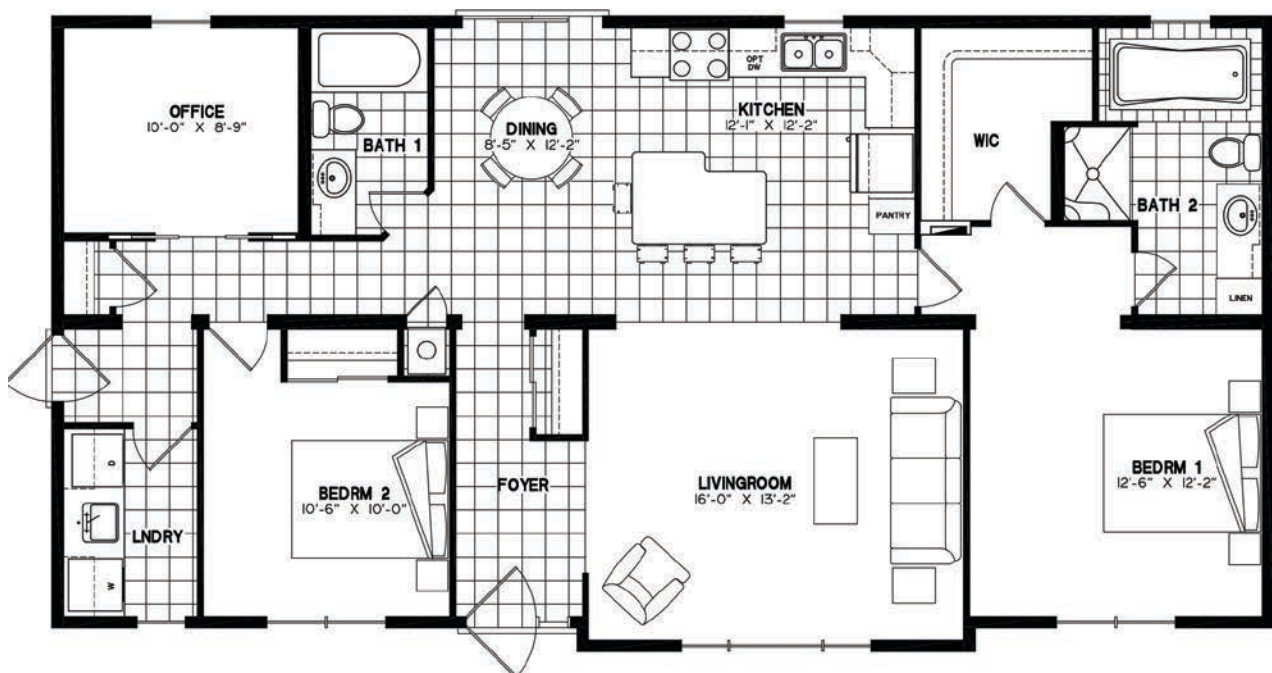
- 2 bedrooms
- Den
- Main bath and ensuite
- His/her closet in master bedroom
- Fiberglass tub/shower combination in main bathroom
- Front load washer/dryer in separate laundry room
- Optional build-out with gas fireplace
- Island with raised breakfast bar
- Optional side entrance door



TRADITIONAL 5226-012

52'-0" x 26'-0" · 1369 sq.ft.

- 2 bedrooms
- Office
- Main bath and ensuite
- Walk-in closet in master bedroom
- Fiberglass tub/shower combination in main bathroom
- Front load washer/dryer and laundry basin



TRADITIONAL 3824-005

38'-0" x 12'-0" · 1109 sq.ft.
 34'-0" x 12'-0"
 20'-0" x 12'-0"

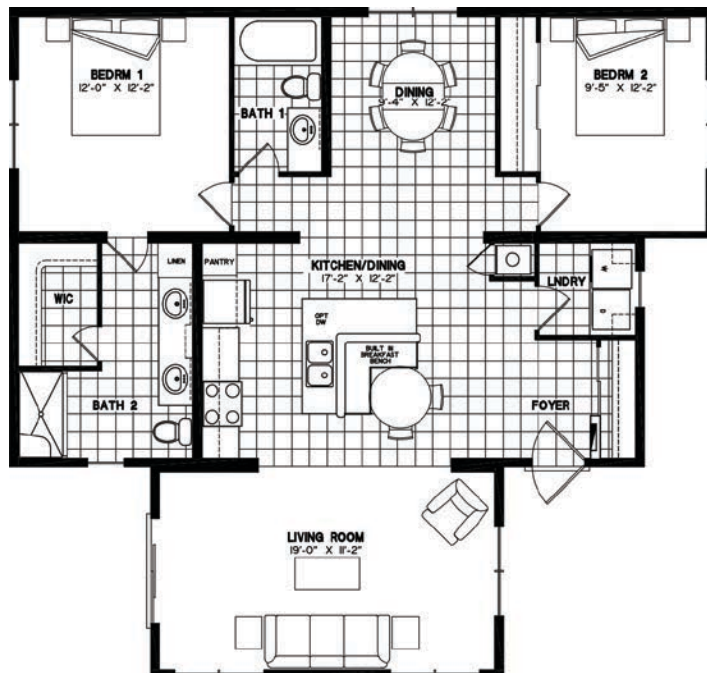
- 2 bedrooms
- Main bath and ensuite
- His/her walk-in closet in master bedroom
- Fiberglass tub/shower combination in both bathrooms
- Front load washer/dryer
- Island with raised breakfast bar
- Optional build-out with gas fireplace



TRADITIONAL 4026-008

40'-0" x 13'-0" · 1228 sq.ft.
 36'-0" x 13'-0"
 20'-0" x 12'-0"

- 2 bedrooms
- Main bath and ensuite
- Walk-in walk-in closet in master bedroom
- Fiberglass tub/shower combination in main bathrooms
- Front load washer/dryer in separate laundry room
- Built-in breakfast bench





TRADITIONAL SPECIFICATIONS

FRAMES AND FLOORS

- Heavy duty steel frame undercarriage with detachable hitch
- Seamless reinforced fibremesh sealite underbelly between chassis and floor
- 2" x 10" floor joists on 16" centres
- 5/8" Dri Deck tongue-and-groove plywood subflooring glued and screw-nailed to floor joist
- Heat ducts within insulated floor cavity. Registers run to outside wall for optimum heating and comfort
- 1" main gas line with outlet

SIDEWALLS

- 2" x 6" studs on 16" centres
- 90" high sidewalls with unique belt rail sidewall stiffeners
- 6 mil. poly vapour barrier
- 7/16" exterior sheathing
- Pre-finished vinyl interior wallboard
- Tyvek exterior building wrap
- Horizontal exterior vinyl siding

ROOF AND CEILING

- Pre-engineered 3.5/12 roof trusses on 16" centres (88 lbs. per sq.ft. snow load) with 17 1/2" overhangs
- 7/16" roof sheathing
- 6 mil. poly vapour barrier
- Ice and Water shield protection at the eave with shingle underlayment on remainder of roof
- Self sealing fiberglass asphalt architectural shingles (limited lifetime warranty)
- Vented attic space to eliminate moisture and heat build up
- Continuous vinyl vented soffit and aluminum fascia
- Expansive vaulted ceiling throughout entire unit
- smooth painted drywall ceilings

PLUMBING

- Heatlink cross-linked polyethylene water lines
- 40-gallon, 240-volt electric water heater
- 4.8-litre ultra-low-flush water saver toilet with insulated tank
- Designer vanity with a porcelain sink

- Deluxe one-piece fibreglass tub/shower combination
- Deluxe 48" & 60" fibreglass shower with glass doors
- Pressure balanced tub & shower faucets
- Chrome single lever faucets throughout with pull-out spray in kitchen
- Chrome towel bar and tissue holder
- Double compartment stainless steel kitchen sink
- Plumbed and wire for washer and 220 volt dryer
- Plumbed and wire for dishwasher
- Frost free exterior water tap

ELECTRICAL AND HEATING

- 100 amp - 48 circuit hydro service with intake through floor
- Prepared for central air conditioner
- 45,000 BTU extra high efficiency gas furnace with electronic ignition and wall thermostat
- White decorative louvered door concealing furnace
- HRV air exchanger providing an optimum balanced ventilation system
- 120 volt heat tape junction box
- Electric strobe, smoke and carbon monoxide detector in living area
- Electric strobe and smoke detector in all bedrooms
- Decora style light switches and receptacles
- 50-cfm bathroom exhaust fan
- Deluxe two speed range hood with light (white)
- Interior GFCI receptacle in bathroom and kitchen as required
- Tamper proof receptacles through-out
- Wired according to ESA specifications
- Exterior GFCI receptacle at entrance doors
- Exterior coach light at entrance doors
- Door Bell
- White LED residential interior light fixtures and recessed LED pot lights in kitchen, living and room & bathroom
- Pendant lights over island and chandelier over Dining Table where applicable
- TV access boxes in master bedroom and living room
- USB receptacle in kitchen and bedroom 1

WINDOWS AND DOORS

- White vinyl Northstar Thermopane single hung (filt to clean) windows with Low 'E' glass, 3 1/2" brick mold, removable screens (no grills), and insulating foam around window frames
- 36" x 80" pre-finished white maintenance free insulated residential exterior door with large window, heavy duty aluminum self-storing storm door, stainless steel door knob and dead bolt
- White vinyl Northstar Thermopane patio door with Low 'E' glass, 3 1/2" brick mold and screen (no grills)

INSULATION - ZONE 1

- Ceiling: R-60 Owens Corning pink fibreglass batt insulation
- Walls: R-22 Owens Corning pink fibreglass batt insulation
- Floors: R-31 Owens Corning pink fibreglass batt insulation

INTERIOR DECOR FINISH

- Eurobox style cabinetry with adjustable shelves, decorative crown moulding and toe kick on all kitchen cabinets
- Thermofoil Shaker style cabinet doors with concealed hinges
- Premium laminate kitchen and bathroom counters with laminate front edging
- Flex-tile decorative backsplash in kitchen and bathrooms
- Roller glide out drawer hardware
- Medicine cabinet with mirror and light (ensuite bathroom)
- Durable maintenance friendly woodgrain vinyl flooring throughout
- White 2 panel interior doors with satin stainless door levers
- Painted white MDF interior trims throughout

OPTIONAL INTERIOR FINISH

- Mirrored or 2 panel closet doors
- Custom designer drapery package

NORTHLANDER WARRANTY

- 1- year product warranty, factory to consumer via dealer.
- 5- year limited warranty for components and performance relating to structural integrity, weather penetration, electrical distribution system, plumbing and heating delivery systems, window and door performance.

All Modular homes manufactured by Northlander Industries are constructed in compliance to the stringent requirements of the C.S.A Standard A-277, National Building Code of Canada and Provincial Amendments.

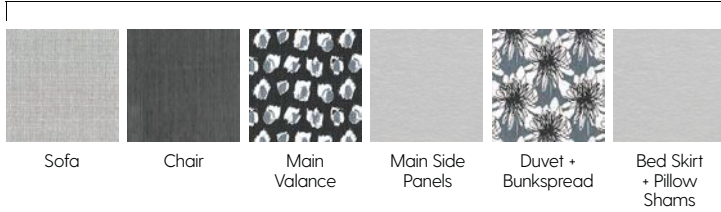
The manufacturer reserves the right to improve or modify the product, without notice or obligation, which may change materials, equipment, specifications or designs. Information contained herein is from the latest data available at the time of printing. Photographs and descriptions may contain some optional extras.





DECOR *packages*

MIDSUMMER MELODY



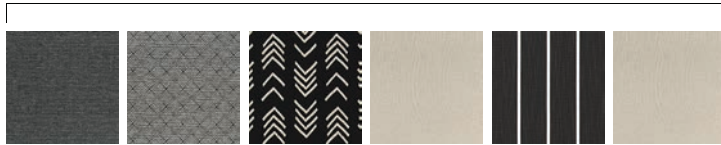
Sofa Chair Main Valance Main Side Panels Duvet + Bunkspread Bed Skirt + Pillow Shams

WALL BOARD



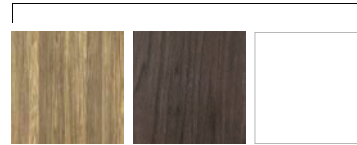
Norwich Pearl Aged Velvet

SMOKED CENTURY



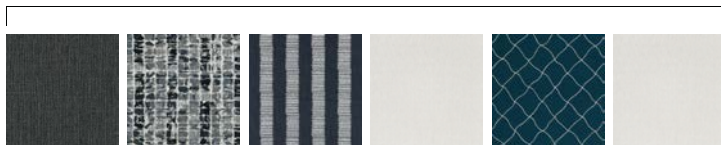
Sofa Chair Main Valance Main Side Panels Duvet + Bunkspread Bed Skirt + Pillow Shams

CABINETY



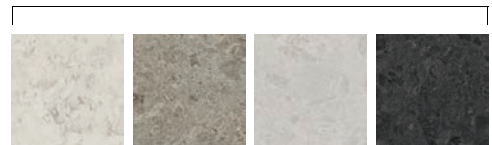
Urban After Hours White

COASTAL ECHO



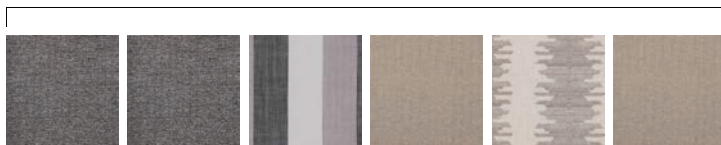
Sofa Chair Main Valance Main Side Panels Duvet + Bunkspread Bed Skirt + Pillow Shams

STANDARD COUNTERTOP



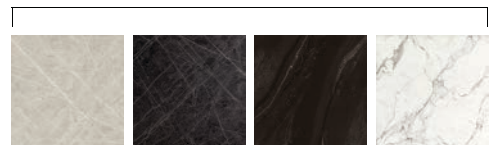
Neo Cloud Silver Shalestone White Shalestone Black Shalestone

STONE SPARKS



Sofa Chair Main Valance Main Side Panels Duvet + Bunkspread Bed Skirt + Pillow Shams

FX COUNTERTOP



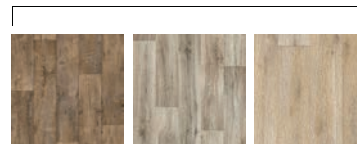
Pietra Graphite Ferro Grafite Black Painted Marble Calacatta Marble

NORTHERN CABIN



Sofa Chair Main Valance Main Side Panels Duvet + Bunkspread Bed Skirt + Pillow Shams

VINYL FLOORING



963D Valley Oak 960M Texas Oak 169M Forest Oak

OUR PROMISE TO YOU...

What a great country we live in. Our vast open spaces and diversified culture make us the envy of the world over. Here at Northlander we are proud to be a strong and vibrant company that puts our customers and their needs first. Robert Shuller once said "Tough times never last, but tough people do." With this phrase in mind Northlander has survived for 60 years where others in the industry haven't. We have done so keeping our head held high with confidence knowing that we are a strong Canadian company providing a well built product. Northlander is home to over 120 skilled Canadian craftsmen and women. Every day they come to Northlander and take pride in the product that they provide to our customers. With that quality, craftsmanship and confidence we can provide one of the best warranties in the business. If you should ever have an issue, your dealer will contact our in-house service department that will efficiently assess the problem. If required we will dispatch one of our skilled service personnel to assist your dealer in correcting the issue.

At Northlander, we realize you are making a significant purchase to supply yourself and your family with years of comfort and security. Whether it's your first home or the place you plan to retire, you will find a perfect unit in one of the two series of manufactured homes. We currently feature 35 complete plans in this brochure. However, if you have specific needs or wants, please be assured that our multi-talented in-house design/sales department will work with your dealer to customize a plan to fit as many of those needs and wants as possible. Making you feel comfortable and secure in your new manufactured home is our biggest goal.

All of this and much more is our personal guarantee to you that Northlander stands behind our work and have done so for half a century.

165 THAMES RD. E., HWY. 83
EXETER, ON, CANADA NOM 1S3
T. 519-235-1530
F. 519-235-2789
northlanderindustries.com

