

*Proudly*  
MADE IN  CANADA  
**NORTHLANDER**

**PARK**  
Model



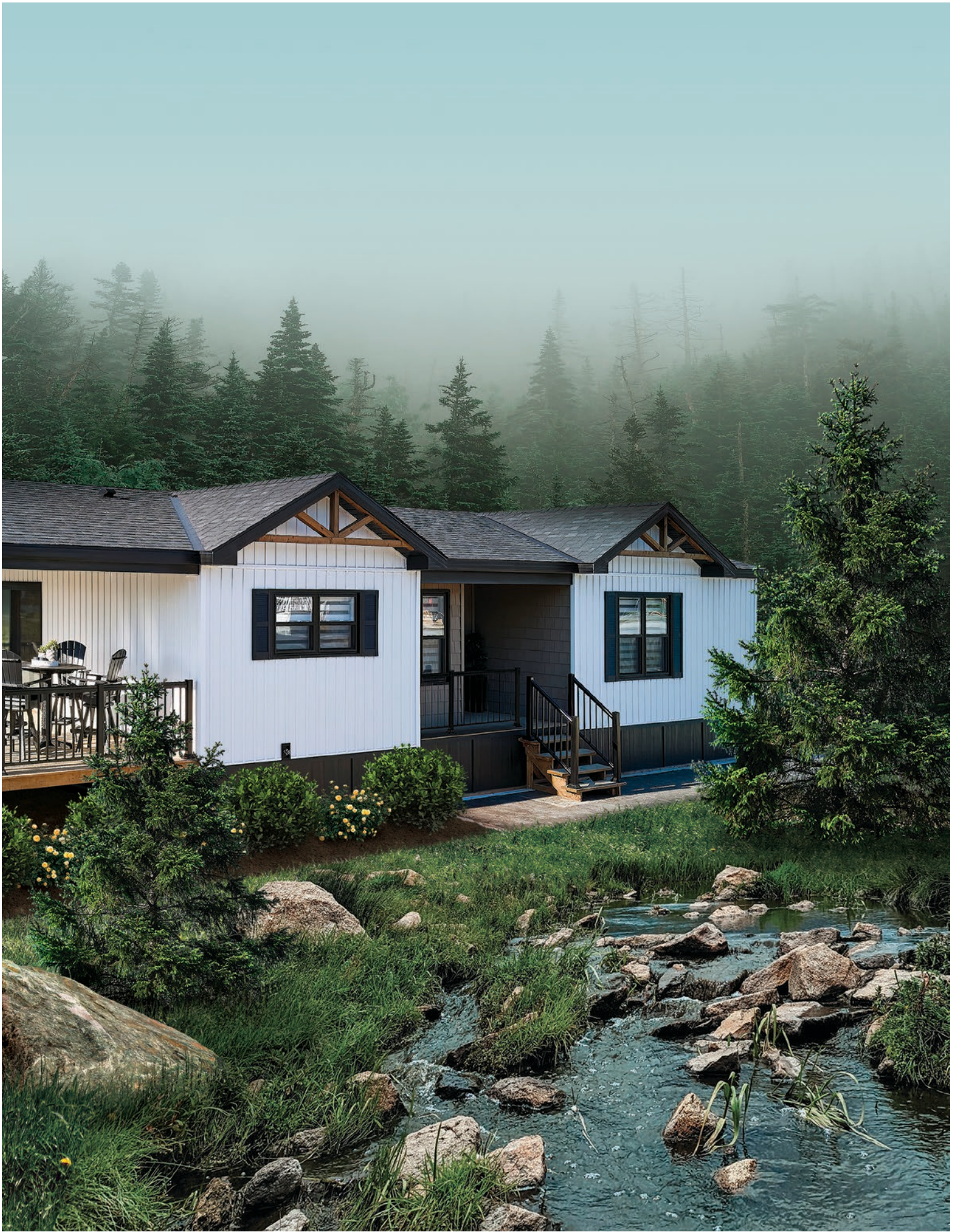
# Dream. Explore. Discover.

Dream of a place where street noise fades, and all you hear is the crackling of a bonfire. Where the concrete jungle is replaced by an actual forest and beautiful waters. And the only thing scheduled on your calendar is relaxation.

Northlander can help you explore wherever those dreams may take you. With Northlander, you are choosing experts in the industry, featuring quality craftsmanship since 1964. With over 50 floorplans and 5 designer décor packages – all with options for customization – let us help you discover where the ordinary is left behind and the extraordinary surrounds you!











## ESCAPE ALL SEASON

Enjoying all four Canadian seasons is at the forefront of Northlander's Escape All Season. Designed to allow you to appreciate the great outdoors while enjoying indoor comforts suited to your lifestyle.



## ESCAPE

Northlander's Escape Series allows you to explore more than ever. With brand new floorplans to choose from, you'll be sure to find your ultimate getaway.



## REFLECTION

Reflect on all the possibilities with Northlander's Reflection Series. Featuring multiple bedroom configurations - offering enough room for the whole family.





ARKLOW



ELKINS



ABILENE



REDKEY



EXHIBITION



# Escape

## ALL SEASON

Why should vacation be seasonal? Northlander's Escape All Season allows for year-round comfort just steps from the great outdoors. Offering single and double wide floorplans customized to your lifestyle, the Escape All Season is equipped with a well-insulated ceiling, walls and floor to enjoy the Canadian winters. It features custom finishes and offers an array of options and upgrades. We at Northlander, put our heart and soul into guaranteeing your comfort so you can escape no matter what time of the year.



### MODERN & BOLD

Transform your living room into a modern oasis with this bold and beautiful open concept living room and kitchen area. Featuring matte black fixtures, trendy furnishings and the Smoked Century Décor Package. Custom-made drapes add an unexpected softness to the bold contrasting fabrics that complement the fixtures making this feel like a unified space.

### EFFORTLESS BALANCE

There is no better way to add a layer of luxury to a living room than a fireplace. This 74" electric fireplace is surrounded by shiplap, tall cabinetry for added storage and windows that offer clean lines and simplicity for today's modern living.



### LAUNDRY GOALS

Laundry may be the last thing on your mind while on vacation, but with the compact yet functional laundry room in the Escape All Season, you'll have the perfect spot to stay organized and on top of your to-do's.

### LIVING IN WARMTH & COMFORT

Enjoy year-round vacationing at its best with the Escape All Season. Enjoy climate controlled comfort whether you're watching the snow fall and sipping on your morning coffee in January or staying cool on those hot August nights.













## AURORA

23-5082-2 | 38' x 12'  
Addition 38' x 12'

- 2 bedroom
- 2 bathroom
- 456 sq. ft.
- + Addition 456 sq. ft.



## ASHBURY

23-5080-2 | 45' x 12'  
Addition 41' x 12'

- 2 bedroom
- 2 bathroom
- 540 sq. ft.
- + Addition 468 sq. ft.

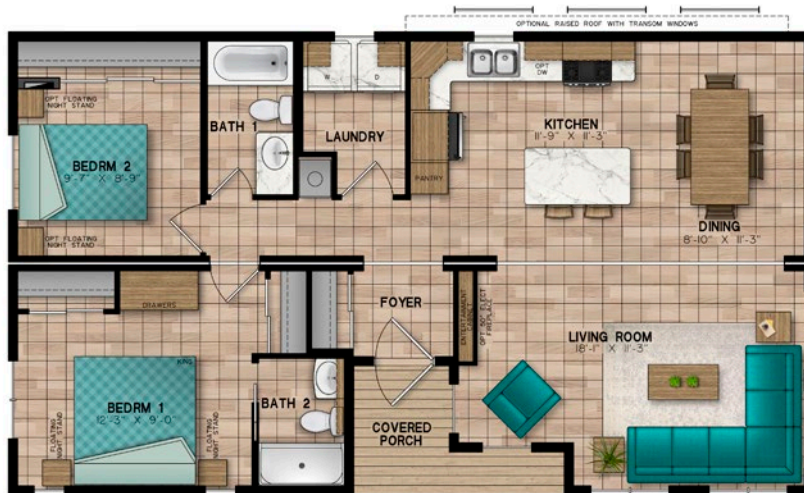


## AMARILLO

23-4959-2 | 45' x 12'  
Addition 45' x 12'

- 2 bedroom
- 2 bathroom
- 529 sq. ft.
- + Addition 444 sq. ft.





## ANDOVER

23-4901-2 | 42' x 12'  
Addition 42' x 12'

- 2 bedroom
- 2 bathroom
- 504 sq. ft.
- + Addition 457 sq. ft.



## ABERDEEN

23-4746-2 | 45' x 12'  
Addition 45' x 12'

- 2 bedroom
- 2 bathroom
- 540 sq. ft.
- + Addition 531 sq. ft.

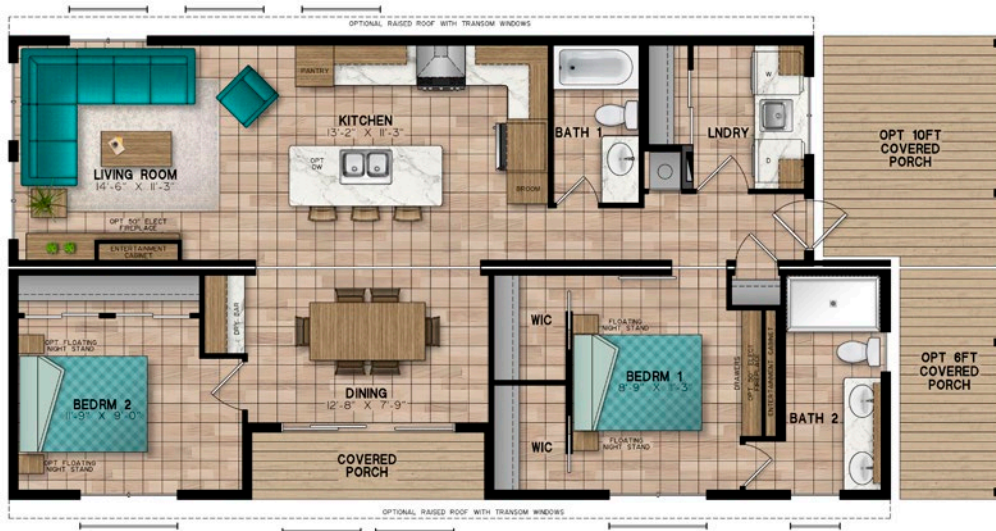


## ALGOMA

23-5081-2 | 45' x 12'  
Addition 27' x 12'

- 2 bedroom
- 2 bathroom
- 540 sq. ft.
- + Addition 324 sq. ft.







# ESCAPE ALL SEASON SPECIFICATIONS

## FRAMES AND FLOORS

- Heavy-duty steel frame undercarriage with detachable hitch
- Seamless reinforced fibremesh seatlute underbelly between chassis and floor
- 2" x 8" floor joists on 16" centers
- 5/8" Dri Deck tongue-and-groove subflooring glued and screw-nailed to floor joist
- Heat ducts within insulated floor cavity with 4" x 10" registers
- 1/2" main gas line with outlet at back end

## SIDEWALLS

- 2" x 4" wall studs on 16" centers (Single Wide and Units with Dormered Addition)
- 2" x 6" wall studs on 16" centers (Double Wide Floorplans)
- 90" High sidewalls with unique belt-rail structural stiffeners
- 6-mil. poly vapour barrier
- 1/4" exterior sheathing
- Pre-finished vinyl interior wallboard
- Tyvek exterior building wrap
- Horizontal exterior vinyl siding

## ROOF AND CEILING

- 4/12 Roof pitch with 6" overhangs on single wide units
- 3.5/12 Roof pitch with 6" overhangs on double wide units
- Pre-engineered roof trusses on 16" centers (88 lbs. Per sq. ft. ground snow load)
- 7/16" Roof sheathing
- 6-mil. poly vapour barrier
- Ice and Water shield protection at the eave
- Self-sealing fiberglass asphalt architectural shingles (limited lifetime warranty)
- Vented attic space to eliminate moisture and heat build-up
- Continuous vinyl vented soffit and fascia
- Pre-textured drywall ceiling panel

## PLUMBING

- Heatlink cross-linked polyethylene water lines and fittings
- 16-gallon propane gas / electric direct spark ignition (DSI) fast-recovery water heater
- Water heater by-pass
- 4.8-litre ultra low-flush water-saver toilet with insulated tank
- Designer vanity with a porcelain sink
- Deluxe built-in medicine cabinet with mirror and open shelf
- Deluxe one-piece fiberglass tub/shower combination with a curved rod and colour coordinating tub drapery panel
- Deluxe one-piece Shower with glass doors in Bath #2
- Chrome high-arch single lever kitchen faucet with pull-out spray
- Chrome dual lever vanity faucet
- Chrome towel bar and tissue holder
- Double compartment 8" deep stainless kitchen sink

## ELECTRICAL AND HEATING

- 24-circuit 30-amp hydro panel with 30' plug-in cord
- 120-volt heat tape junction box at water inlet
- Electric smoke / CO2 detector
- Safe-T-Alert gas alarm
- Decora-style light switches and receptacles

- Wired and prepared for basement air conditioning
- 50-cfm bathroom exhaust fan
- Interior GFCI-protected receptacle in bathroom and kitchen
- 2 Exterior GFCI-protected receptacles
- Exterior coach light at all doors
- 56,000 BTU forced air propane furnace with electronic ignition and wall thermostat
- Fresh air inlet to furnace
- White LED residential interior light fixtures & recessed LED pot lights in kitchen, living room & bathroom
- Pendant lights over the island and over dining table where applicable
- TV access box in living room
- USB Receptacle in Kitchen and Bedroom 1

## WINDOWS AND DOORS

- White vinyl Northstar Thermopane single-hung (tilt to clean) windows with low 'E' glass, no grills, 3 1/2" brickmold and removable screens
- 32"x 80" pre-finished white maintenance free insulated residential exterior door with large window, no grills, and heavy-duty aluminum self-storing storm door
- White vinyl Northstar Thermopane patio door with low "E" glass, screen and no grills
- Pentagon or trapezoid Thermopane window with low "E" on front end where floor plan permits

## INSULATION

- Ceilings: R-32 Owens Corning pink fibreglass batt insulation (Single Wide and Units with Dormered Addition)
- Ceilings: R-40 Owens Corning pink fibreglass batt insulation in ceiling (Double Wide Floorplans)
- 2x4 Walls: R-12 Owens Corning pink fibreglass batt insulation
- 2x6 Walls: R-20 Owens Corning pink fibreglass batt insulation
- Floors: R-24 Owens Corning pink fibreglass batt insulation

## INTERIOR DECOR FINISH

- Euro box style cabinetry with adjustable shelves, decorative crown moulding and toe kick on all kitchen cabinets
- Thermofoil shaker style cabinet doors with concealed hinges
- Large entertainment cabinet wall unit with space for an optional electric fireplace
- Premium laminate kitchen counter with laminate front edging
- Flex-tile decorative backsplash in kitchen and bathrooms
- Roller glide-out metal drawer box hardware
- Durable maintenance friendly woodgrain patterned vinyl flooring throughout
- White 2-panel interior doors with satin stainless lever door hardware
- Nightstands in master bedroom
- Built-in chest of drawers in master bedroom
- Overhead cabinets above bed in master bedroom in single wides
- Wardrobe storage in second and third bedrooms
- Large wardrobe closet walk-in closet in master bedroom
- Ceiling crown mouldings throughout with casing on windows and doors
- Custom designer drapery valances on removable rods
- Bunk matt covers in second and third bedrooms
- Drapery panels at patio door



# Escape

Explore the possibilities with the Escape, blending contemporary and traditional, while offering that modern edge with familiar comfort. Featuring 12ft, 13ft and 14ft wide models including units with additions, Northlander's Escape series offers a choice of space tailored to your needs. Vaulted ceilings and generous windows flood your space with light and comfort – allowing you to experience the great outdoors – indoors! Built without sacrificing quality or comfort. It's time to leave the ordinary behind and ESCAPE to something extraordinary!



## LIT FROM ABOVE

Northlander's Escape Series offers ample solutions for lighting. Included in every model is recessed lighting in the kitchen and bath, LED fixtures throughout and modern pendants above your island or peninsula. A custom overhead with built-in lighting in the kitchen is both tasteful in design and very functional. Upgrade to matte black fixtures throughout to add a daring and bold contrast to your cottage design.

## ADD A SPLASH

Spacious and bold – this two-toned kitchen showcases Northlander's quality and craftsmanship. Eurobox cabinetry and Shaker doors are paired with sleek Matte Black hardware and fixtures to create this one-of-a-kind look! In addition this functional kitchen is upgraded with a mesmerizing backsplash that truly sets this space above the rest.



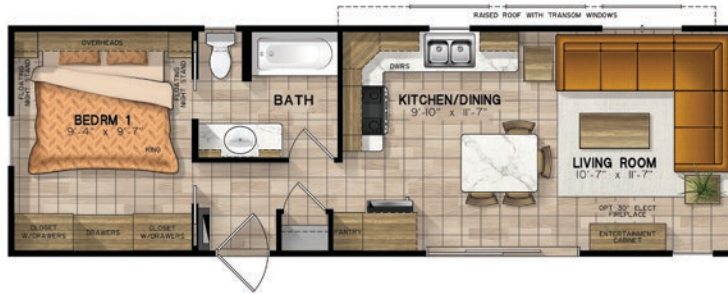
## DINING WITH A VIEW

Whether you are gathered around the island or relaxing in the living room, Northlander's Escape Series allows you to enjoy your time with a view. This Escape floorplan provides ample windows and expansive Transom Rooflines featuring ceiling beams that allows the natural light to flood your open concept space...bringing the outdoors-in!

## 360 DEGREES OF DESIGN

Offering 5 new décor packages, 3 new flooring options and countless upgrades the Escape Series allows for a full 360° of customization. Northlander takes pride in their teams ability to help create the cottage of your dreams.





## ELGIN

25-5238-1 | 38' x 12'

- 1 bedroom
- 1 bathroom
- 456 sq. ft.



## ERINDALE

25-5239-2 | 38' x 12'

- 2 bedroom
- 1 bathroom
- 456 sq. ft.



## EDMUND

25-5240-2 | 40' x 12'

- 2 bedroom
- 1 bathroom
- 485 sq. ft.



## EVERETT

25-5241-2 | 40' x 12'

- 2 bedroom
- 1 bathroom
- 480 sq. ft.





## EDWARD

25-5242-2 | 40' x 12'

- 2 bedroom
- 1 bathroom
- 485 sq. ft.



## EATON

25-5243-2 | 42' x 12'

- 2 bedroom
- 1 bathroom
- 504 sq. ft.



## EASTFORD

25-5244-2 | 43' x 12'

- 2 bedroom
- 1 bathroom
- 538 sq. ft.



## ETHEL

25-5245-2 | 44'-8" x 12'

- 2 bedroom
- 1 bathroom
- 540 sq. ft.

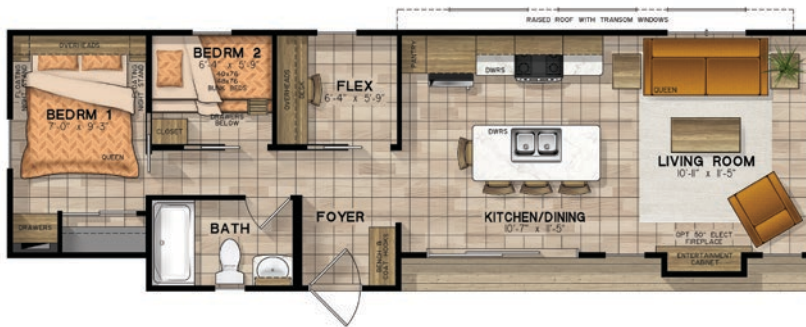




## ELKHORN

25-5246-3 | 42'-11" x 12'

- 3 bedroom
- 1 bathroom
- 540 sq. ft.



## ELROSE

25-5247-2 | 42'-7" x 13'-9"

- 2 bedroom
- 1 bathroom
- 539 sq. ft.

### Optional Bedroom 3 Layout

*Bedroom 2 Layout in place of Office*



## EVERGREEN

25-5248-2 | 41'-10" x 13'

- 2 bedroom
- 1 bathroom
- 540 sq. ft.

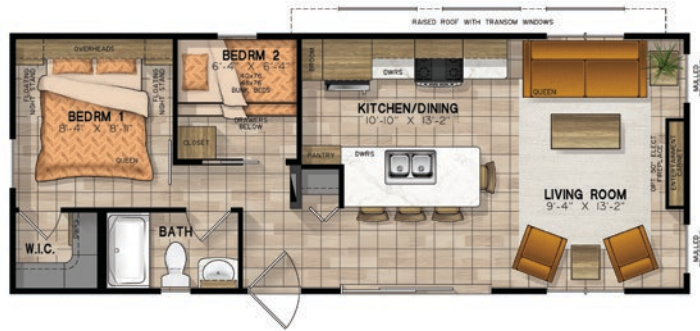


## EMMA

25-5249-2 | 42' x 13'

- 2 bedroom
- 1 bathroom
- 540 sq. ft.





## EDEN

25-5250-2 | 36' x 13'-9"

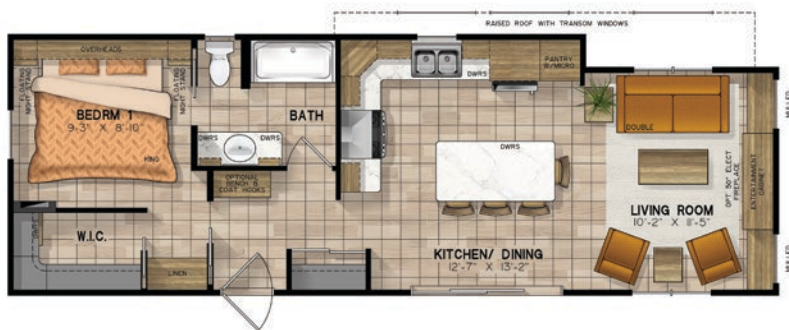
- 2 bedroom
- 1 bathroom
- 495 sq. ft.



## ELDER

25-5251-3 | 39'-3" x 13'-9"

- 3 bedroom
- 1 bathroom
- 540 sq. ft.



## ELMGROVE

25-5252-1 | 40'-6" x 13'-9"

- 1 bedroom
- 1 bathroom
- 539 sq. ft.



## EVANS

25-5253-2 | 39'-9" x 13'-9"

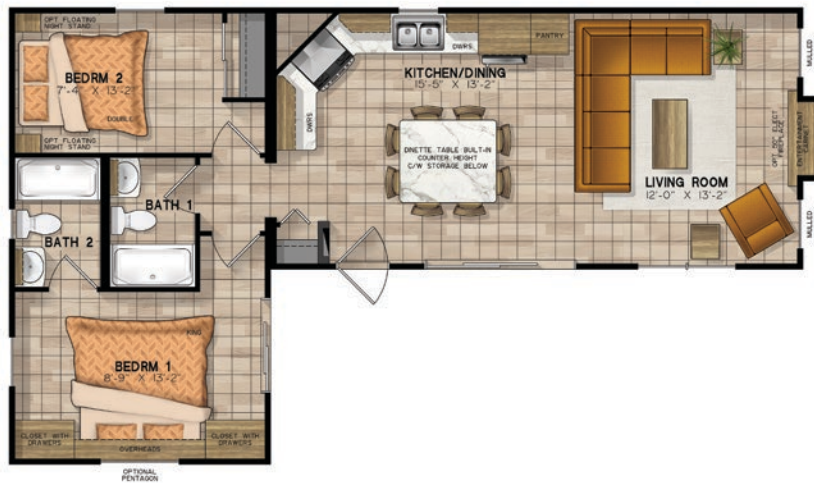
- 2 bedroom
- 1 bathroom
- 538 sq. ft.



## ELMSLEY

25-5254-2 | 37' x 12'  
Addition 16' x 12'

- 2 bedroom
- 1 bathroom
- 444 sq. ft.
- + Addition 192 sq. ft.



## EMILY

25-5255-2 | 28' x 13'-9"  
Addition 24' x 13'-9"

- 2 bedroom
- 1 bathroom
- 390 sq. ft.
- + Addition 330 sq. ft.



## ESKER

25-5256-2 | 40' x 10'  
Addition 40' x 10'

- 2 bedroom
- 2 bathroom
- 400 sq. ft.
- + Addition 392 sq. ft.





## EILEAN

25-5257-3 | 40' x 12'

Addition 20' x 12'

- 3 bedroom
- 2 bathroom
- 480 sq. ft.
- + Addition 240 sq. ft.



## EDGEWOOD

25-5258-2 | 40' x 12'

Addition 20' x 12'

- 2 bedroom
- 2 bathroom
- 480 sq. ft.
- + Addition 240 sq. ft.



## ELLIOT

25-5259-2 | 40' x 12'

Addition 38' x 12'

- 2 bedroom
- 2 bathroom
- 480 sq. ft.
- + Addition 312 sq. ft.





# ESCAPE

## SPECIFICATIONS

### FRAMES AND FLOORS

- Heavy-duty steel frame undercarriage with detachable hitch
- Seamless reinforced fibremesh sealite underbelly between and floor
- 2" x 6" floor joists on 16" centres
- 5/8" Dri Deck tongue-and-groove subflooring glued and screw-nailed to floor joist
- Heat ducts within insulated floor cavity with 4" x 10" registers
- 1/2" main gas line with outlet at back end

### SIDEWALLS

- 2" x 4" wall studs on 16" centres
- 1/4" Exterior sheathing
- 90" high sidewalls with unique belt-rail structural stiffeners
- Pre-finished vinyl interior wallboard
- Tyvek exterior building wrap
- Horizontal exterior vinyl siding
- 12" decorative exterior window shutters on front and door side

### ROOF AND CEILING

- 4/12 roof pitch with overhangs on single wide units
- 3.5/12 roof pitch with overhangs on double wide units
- Transom Raised Roof standard in Single Wide & units with Dormered Addition. Optional on Double Wide Floorplans
- Pre-engineered roof trusses on 16" centres (88 lbs. per sq. ft. ground snow load)
- 7/16" roof sheathing
- Ice and water shield protection at the eave
- Self-sealing fibreglass asphalt architectural shingles (limited lifetime warranty)
- Vented attic space to eliminate moisture and heat build-up
- Continuous vinyl vented soffit and aluminum fascia
- Expansive vaulted ceiling
- Pre-textured drywall ceiling panel

### PLUMBING

- Heatlink cross-linked polyethylene water lines and fittings
- 16-gallon propane gas / electric direct spark ignition (DSI) fast-recovery water heater
- Water heater by-pass
- 4.8-litre ultra-low-flush water-saver toilet with insulated tank
- Designer vanity with a porcelain sink and laminate countertop
- Deluxe built-in medicine cabinet with mirror and open shelf
- Deluxe one-piece fibreglass tub/shower combination with a curved rod and colour coordinating tub drapery panel
- Chrome high-arch single lever kitchen faucet with pull-out spray
- Chrome dual lever vanity faucet
- Chrome towel bar and tissue holder
- Double compartment 8" deep stainless steel kitchen sink

### ELECTRICAL AND HEATING

- 24-circuit 30-amp hydro panel with 30' plug-in cord
- Electric smoke / CO2 detector
- Safe-T-Alert gas alarm
- Decora-style light switches and receptacles
- Wired and prepared for basement air conditioning

- 50 cfm bathroom exhaust fan
- Interior GFCI-protected receptacle in bathroom and kitchen
- 2 Exterior GFCI-protected receptacles
- Exterior coach light at patio door
- 40,000 BTU forced air propane furnace with in-floor ducting, electronic ignition and wall thermostat
- 56,000 BTU forced air propane furnace with electronic ignition and wall thermostat in some floor plans.
- White LED residential interior light fixtures & recessed LED pot lights in kitchen & bath
- Pendant lights over island where applicable
- TV access box in living room
- USB Receptacle in Kitchen

### WINDOWS AND DOORS

- White vinyl Thermopane single-hung (tilt to clean) windows with removable screens
- 32"x 80" pre-finished white maintenance free insulated residential exterior door with large window, no grills, and heavy-duty aluminum self storing storm door
- White Thermopane patio door with screen
- Pentagon, or Trapezoid Thermopane window on front end where floor plan permits

### INSULATION

- Ceilings: R-12 Owens Corning pink fibreglass batt insulation
- Walls: R-12 Owens Corning pink fibreglass batt insulation
- Floors: R-12 Owens Corning pink fibreglass batt insulation

### INTERIOR DECOR FINISH

- Eurobox style cabinetry with adjustable shelves, decorative crown moulding and toe kick on all kitchen cabinets
- Thermofoil shaker style cabinet doors with concealed hinges
- Large entertainment cabinet wall unit with space for an optional electric fireplace
- Premium laminate kitchen counter with laminate front edging
- Flex-tile decorative backsplash in kitchen and bathrooms
- Roller glide-out metal drawer box hardware
- Durable maintenance friendly woodgrain patterned vinyl flooring throughout
- White 2-panel interior doors with satin stainless lever door hardware
- Nightstands in master bedroom
- Built-in chest of drawers in master bedroom
- Overhead cabinets above bed in master bedroom
- Wardrobe storage in second and third bedrooms
- Large wardrobe closet with mirrored sliders or walk-in closet in master bedroom
- Ceiling crown mouldings throughout with casing on windows and doors
- Custom designer drapery valances on removable rods
- Bunk matt covers in second and third bedrooms
- Drapery panels at patio door

# Reflection

Imagine a calm lake... you are standing on a dock. What do you see when you look into the serene water? Your reflection. At Northlander, we strive to make our unit reflect our customers and their desires. If you crave a well-built, attractive retreat, our ultrapopular Reflection is a great investment. With one, two, and three bedroom plans to choose from, the Reflection is sure to accommodate you and the needs of your family. At Northlander, comfort and quality is standard, and you can be assured your vacation retreat will stand the test of time. Find the beauty in simplicity and take pride in your Reflection!



## FIND YOUR STYLE

Reflect on all the possibilities when selecting your Northlander Reflection. Featuring 7 floorplans with 3 Designer Décor packages and a wide range of Vinyl Siding colours, you will be sure to enjoy the cottage life you've been dreaming of.

## CALM AND QUIET LIVING

Northlander has made it possible for everyone to enjoy the casual cottage lifestyle. Featuring 96" sidewalls and widespread flat ceilings, you'll feel right at home in this open concept living space.



## REFRESH AND RENEW

All of Northlander's Reflection Series feature a 3-piece bath with mirrored medicine cabinet and chrome towel bar. Included is an easy-to-clean fibreglass tub/shower with Designer Valance or opt to upgrade to a one-piece shower with glass doors if you prefer.

## PACK YOUR BAGS

When purchasing your Northlander Reflection rest assured, we've got you covered. Kitchen appliances, furnishing and linens are all included. Just pack up your car with groceries and your weekend bag, and you will be ready to relax and enjoy the family fun.





## REDKEY

23-4952-1 | 36' x 12'

- 1 bedroom
- 1 bathroom
- 432 sq. ft.



### Optional Living Room Layout

\*Sectional Optional in  
23-4952-1 Only



## RAGSDALE

23-4953-2 | 38' x 12'

- 2 bedroom
- 1 bathroom
- 456 sq. ft.



## RIDGEVILLE

23-4954-2 | 38' x 12'

- 2 bedroom
- 1 bathroom
- 456 sq. ft.



## RILEY

23-4955-3 | 38' x 12'

- 3 bedroom
- 1 bathroom
- 456 sq. ft.



## RUSSETON

23-4967-2 | 38' x 12'

Addition 16' x 12'

- 2 bedroom
- 1 bathroom
- 456 sq. ft.
- + Addition 192 sq. ft.



## RICHLAND

23-4968-3 | 38' x 12'

Addition 16' x 12'

- 3 bedroom
- 1 bathroom
- 456 sq. ft.
- + Addition 192 sq. ft.



## RALLY

23-4966-2 | 38' x 12'

Addition 16' x 12'

- 2 bedroom
- 1 bathroom
- 456 sq. ft.
- + Addition 192 sq. ft.



# REFLECTION SPECIFICATIONS

## FRAMES AND FLOORS

- Heavy-duty steel frame undercarriage with detachable hitch
- Seamless reinforced fibremesh sealite underbelly between chassis and floor
- 2" x 6" floor joists on 16" centres
- 5/8" Dri Deck tongue-and-groove subflooring glued and screw-nailed to floor joist
- Heat ducts within insulated floor cavity with 4" x 10" registers
- 1/2" main gas line with outlet at back end

## SIDEWALLS

- 2" x 3" wall studs on 16" centres
- 96" high sidewalls with unique belt-rail structural stiffeners
- Pre-finished vinyl interior wallboard (Norwich Pearl ONLY)
- Tyvek exterior building wrap
- Horizontal exterior vinyl siding
- 12" decorative exterior window shutters on front and door side

## ROOF AND CEILING

- 4/12 roof pitch with overhangs
- Pre-engineered roof trusses on 16" centres (88 lbs. per sq. ft. ground snow load)
- 7/16" roof sheathing
- Ice and water shield protection at the eave
- Self-sealing fibreglass asphalt architectural shingles (limited lifetime warranty)
- Vented attic space to eliminate moisture and heat build-up
- Continuous vinyl vented soffit and aluminum fascia
- Lofty flat ceiling throughout entire unit
- Pre-textured drywall ceiling panel

## PLUMBING

- Heatlink cross-linked polyethylene water lines and fittings
- 16-gallon propane gas / electric direct spark ignition (DSI) fast-recovery water heater
- Water heater by-pass
- 4.8-litre ultra-low-flush water-saver toilet with insulated tank
- Deluxe one-piece fibreglass tub/shower combination with colour coordinating tub valance
- Vanity with white finish, porcelain top and 2 handle chrome faucet
- Deluxe white medicine cabinet with mirror
- Chrome towel bar and tissue holder
- Double compartment 8"-deep stainless steel kitchen sink
- Chrome single lever faucet in kitchen

## ELECTRICAL AND HEATING

- 24-circuit 30-amp hydro panel with 30' plug-in cord
- Electric smoke detector
- Safe-T-Alert gas alarm
- Decora-style light switches and receptacles
- Wired and prepared for basement air conditioning
- 50 cfm bathroom exhaust fan
- Interior GFCI-protected receptacle in bathroom and kitchen
- 2 Exterior GFCI-protected receptacles

- 40,000 BTU forced air propane furnace with in-floor ducting, electronic ignition and wall thermostat
- Brushed pewter residential interior light fixtures and Ceiling Fan (Livingroom) with LED bulbs and White Recessed Pot lights in Kitchen
- TV access box in living room
- USB Receptacle in Kitchen

## WINDOWS AND DOORS

- White vinyl Thermopane single-hung (tilt to clean) windows with removable screens
- 32" x 80" pre-finished white maintenance-free insulated residential exterior door with large window, no grills, and heavy-duty aluminum self-storing storm door
- White vinyl 60" x 80" Thermopane patio door with screen (no grills)

## INSULATION

- Ceilings: R-12 Owens Corning pink fibreglass batt insulation
- Walls: R-8 Owens Corning pink fibreglass batt insulation
- Floors: R-12 Owens Corning pink fibreglass batt insulation

## INTERIOR DECOR FINISH

- Euro box style cabinetry with adjustable shelves, decorative crown moulding and toe kick on all kitchen cabinets
- Thermofoil beveled edge cabinet doors with concealed hinges
- Freestanding entertainment cabinet with space for an optional electric fireplace
- Freestanding entertainment cabinet in 23-4954-2 and 23-4967-2 bedroom # 2
- Premium laminate kitchen counter with laminate front edging
- Roller glide-out metal drawer box hardware
- Durable maintenance friendly woodgrain vinyl flooring throughout (960M Texas Oak ONLY)
- White colonial interior doors with satin stainless steel door hardware
- Floating nightstands in master bedroom
- Overhead cabinets above bed in master bedroom
- Drawers below bunk beds in second and third bedrooms
- Large wardrobe closet with mirrored sliding doors in master bedroom
- Custom designer drapery valances on removable rods
- Bunk matt covers in second and third bedrooms
- Drapery Rod with Panels at patio door

**Note:** After Hours trim package with white kitchen & bathroom cabinetry ONLY.

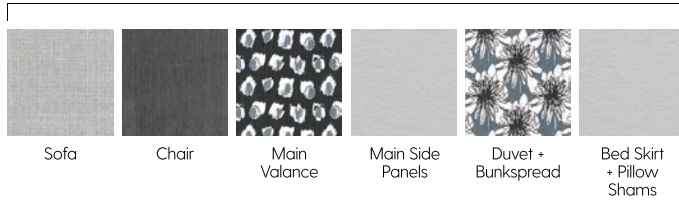
**Single Units Include:** Stainless appliances, 4 bar stools, sofa

& stationary chair in same upholstery (2 chairs in 23-4952-1 or Optional Sectional & 1 Stationary chair in 23-4952-1), coffee table, end table, lamp, Queen Duvet Cover with Skirt and Shams, Bunk Covers in Bedroom 2 & 3.

**Units with Additions Include:** Stainless appliances, 3 bar stools, 5 pc. dinette set, sofa & stationary chair in same upholstery, coffee table, end table and lamp.

# DECOR*packages*

## MIDSUMMER MELODY



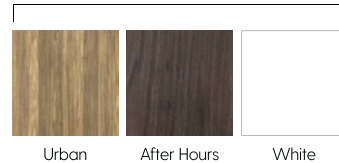
## WALL BOARD



## SMOKED CENTURY



## CABINETRY



## COASTAL ECHO



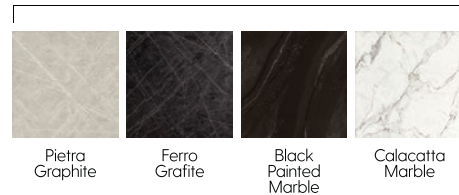
## STANDARD COUNTERTOP



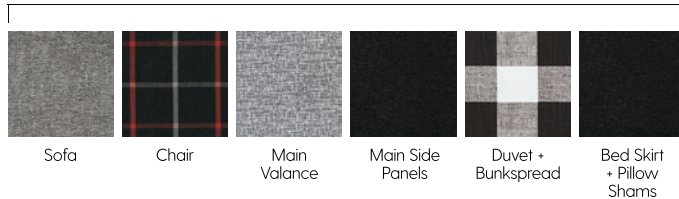
## STONE SPARKS



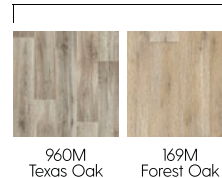
## FX COUNTERTOP



## NORTHERN CABIN



## VINYL FLOORING





## NORTHLANDER WARRANTY

1-Year product warranty, factory to consumer via dealer

5-Year limited warranty for components and performance relating to structural integrity, weather penetration, electrical distribution system, plumbing and heating delivery systems, window and door performance.

All Park Models manufactured by Northlander Industries are constructed in compliance with the stringent standards of the C.S.A.-Z241 Park Model Standard.

The manufacturer reserves the right to improve or modify the product, without notice or obligation, which may change materials, equipment, specifications or designs. Information contained herein is from the latest data available at the time of printing. Photographs and descriptions may contain some optional extras.



## OUR PROMISE TO YOU...

What a great country we live in. Our vast open spaces and diversified culture make us the envy of the world over. Here at Northlander we are proud to be a strong and vibrant company that puts our customers and their needs first. Robert Shuller once said "Tough times never last, but tough people do." With this phrase in mind Northlander has survived for 60 years where others in the industry haven't. We have done so keeping our head held high with confidence knowing that we are a strong Canadian company providing a well built product. Northlander is home to over 120 skilled Canadian craftsmen and women. Every day they come to Northlander and take pride in the product that they provide to our customers. With that quality, craftsmanship and confidence we can provide one of the best warranties in the business. If you should ever have an issue, your dealer will contact our in-house service department that will efficiently assess the problem. If required we will dispatch one of our skilled service personnel to assist your dealer in correcting the issue.

At Northlander, we realize you are making a significant purchase to supply yourself and your family with years of comfort and security. Whether it's your first home or the place you plan to retire, you will find a perfect unit in one of the series of park model homes. We currently feature 48 complete plans in this brochure. However, if you have specific needs or wants, please be assured that our multi-talented in-house design/sales department will work with your dealer to customize a plan to fit as many of those needs and wants as possible. Making you feel comfortable and secure in your new manufactured home is our biggest goal.

All of this and much more is our personal guarantee to you that Northlander stands behind our work and have done so for half a century.

165 THAMES RD. E., HWY. 83  
EXETER, ON, CANADA N0M 1S3  
T. 519-235-1530  
F. 519-235-2789  
**northlanderindustries.com**

